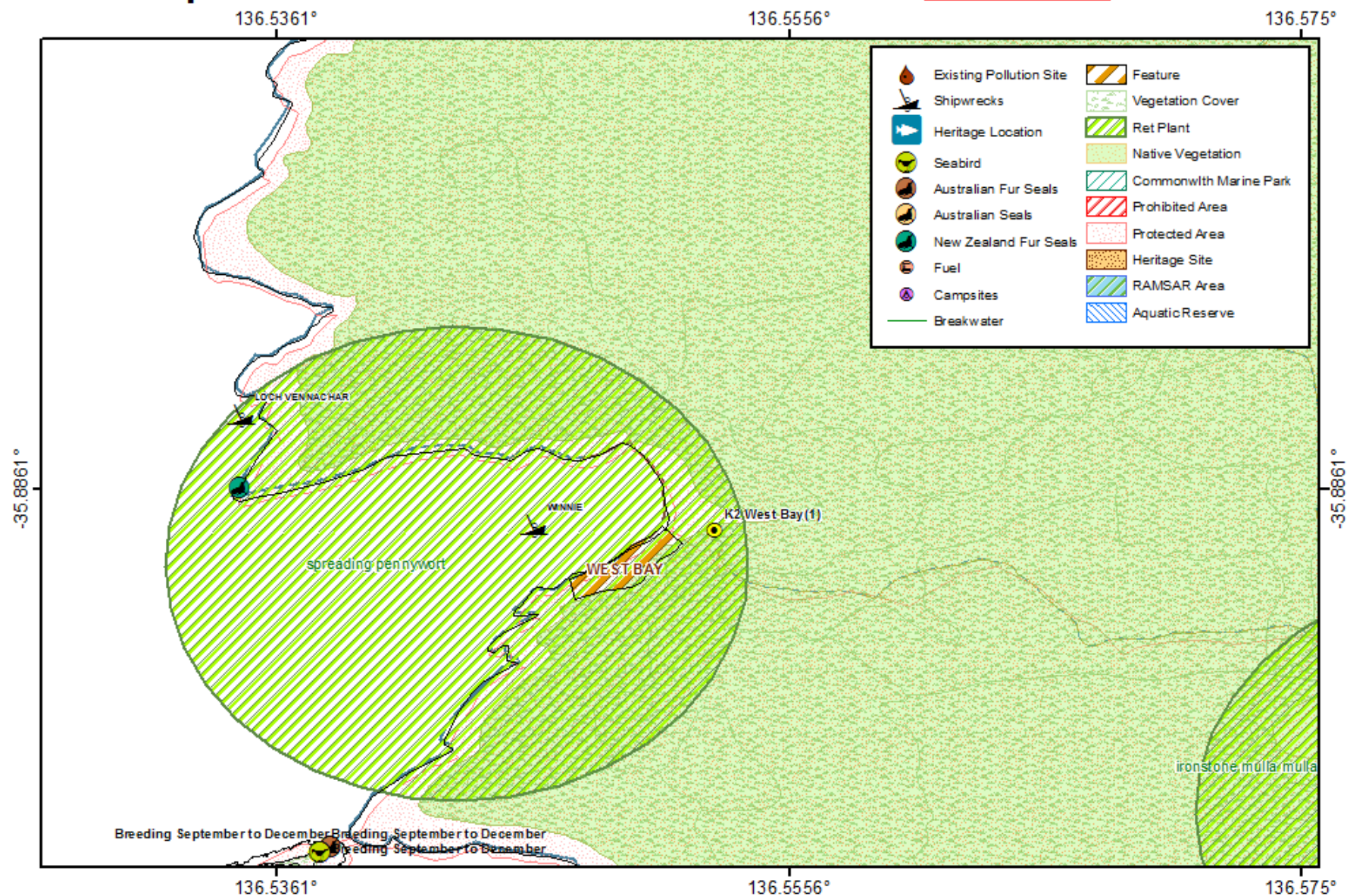


# OSRA Map

0 0.375 0.75 1.5 Kilometres

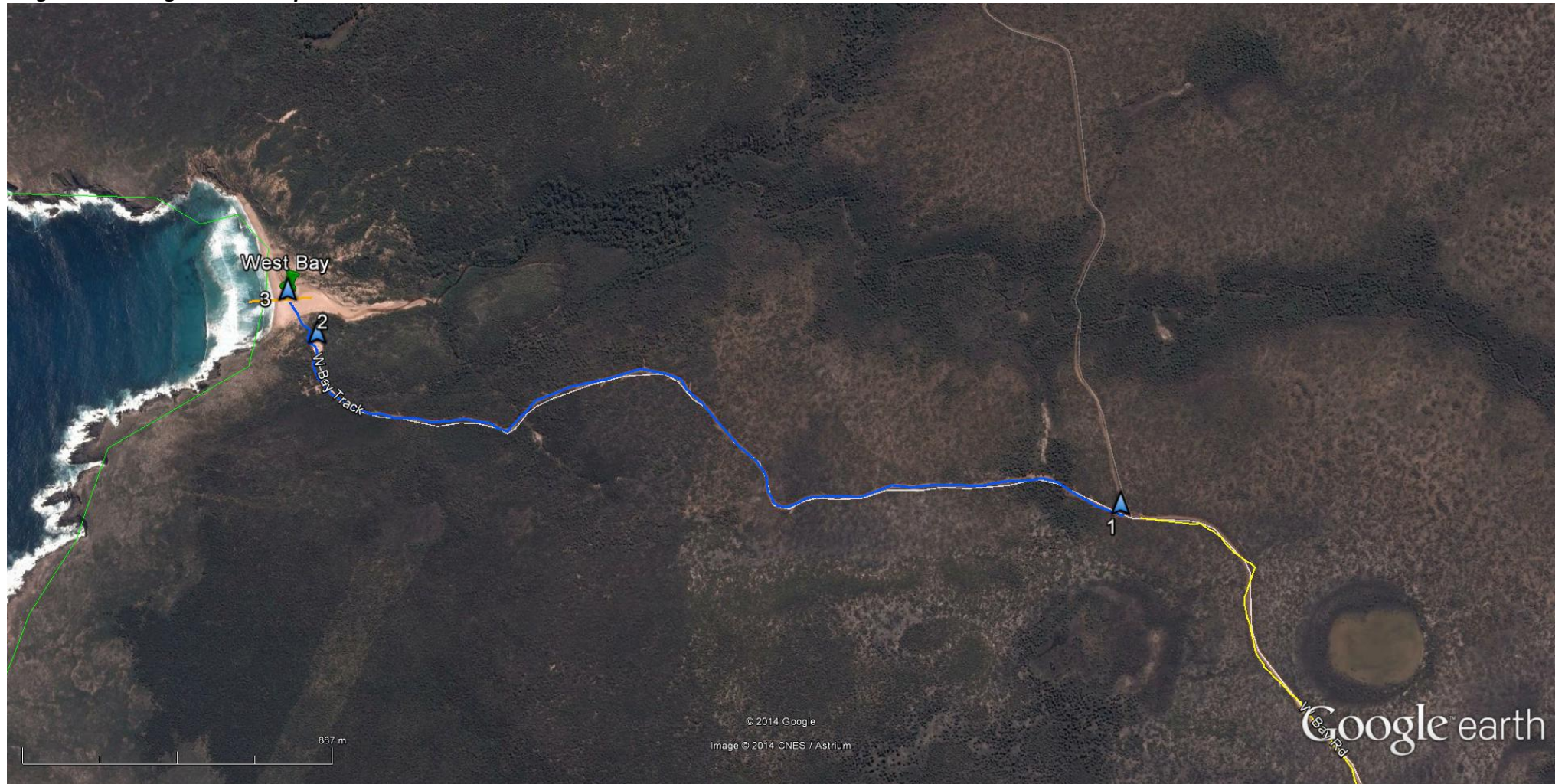
Warning: This map not to be used for navigation or measurement purposes.



Oil Spill Response Atlas (OSRA) map layers provided courtesy of the Australian Maritime Safety Authority (AMSA)



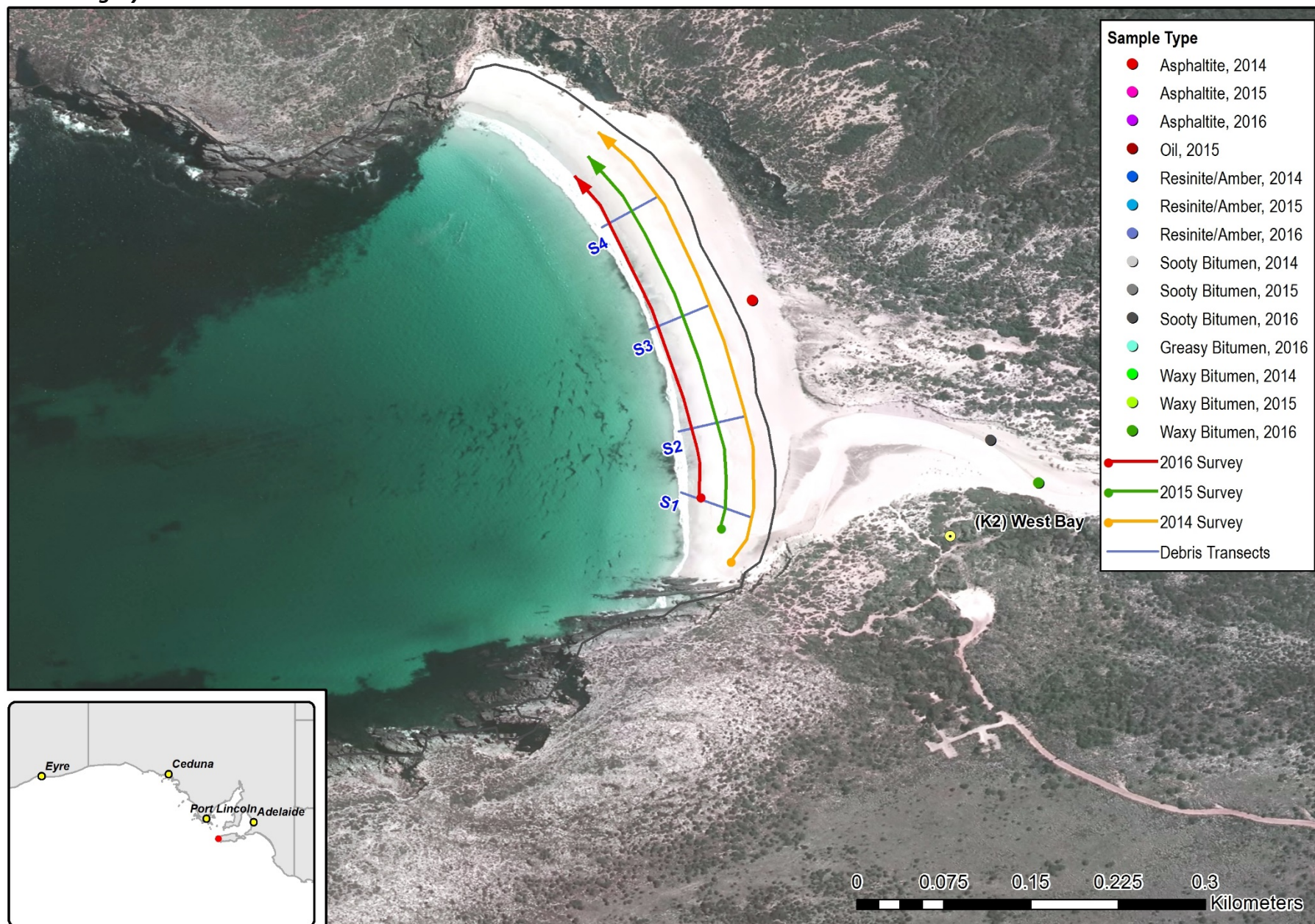
*Large scale Google Earth map*





# Beach Survey Records

## Transects and imagery





# Beach: West Bay

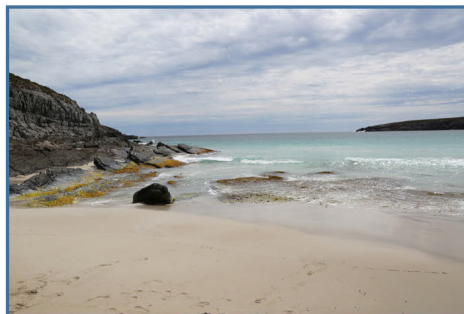
*To Sea*

*To Shore*

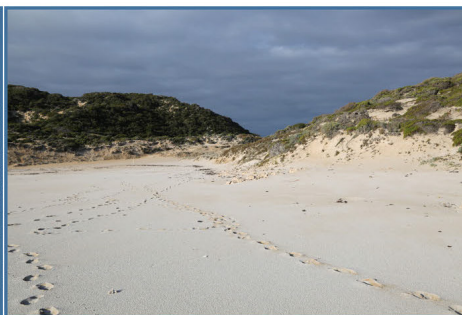
*Along*

*Back*

2014



2015



2016

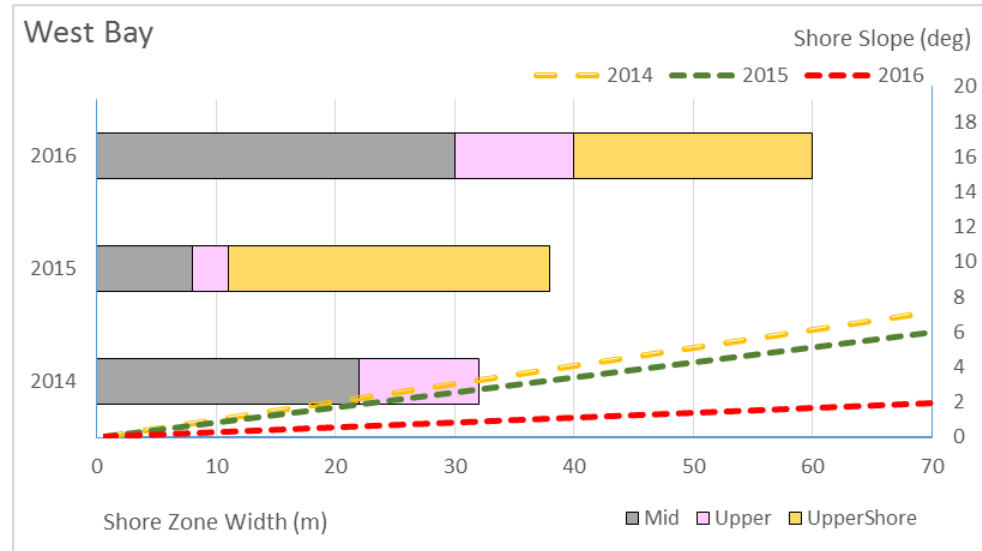




## Beach Summary Data

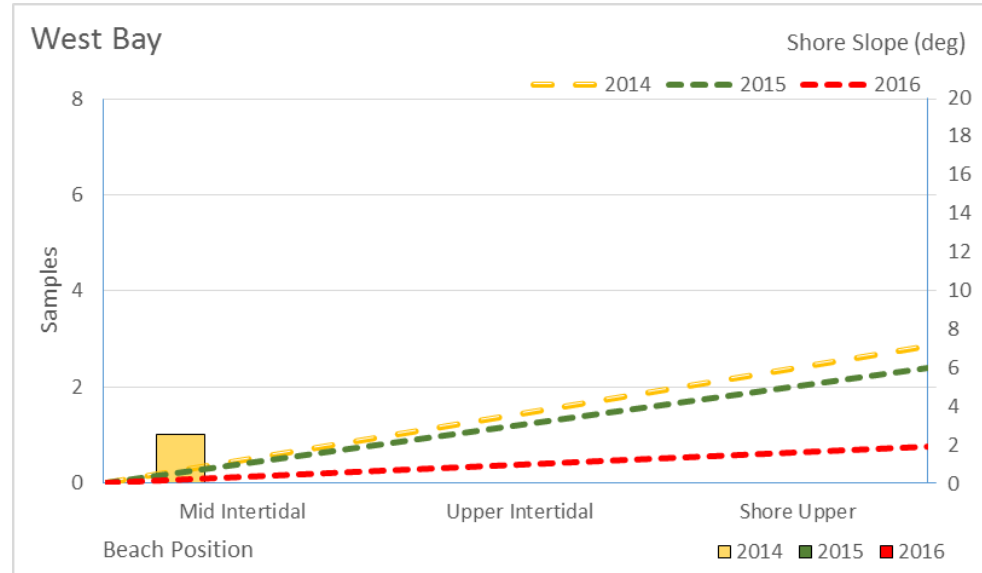
[sample types include asphaltite, tarball and resinite]

### Beach Character Chart

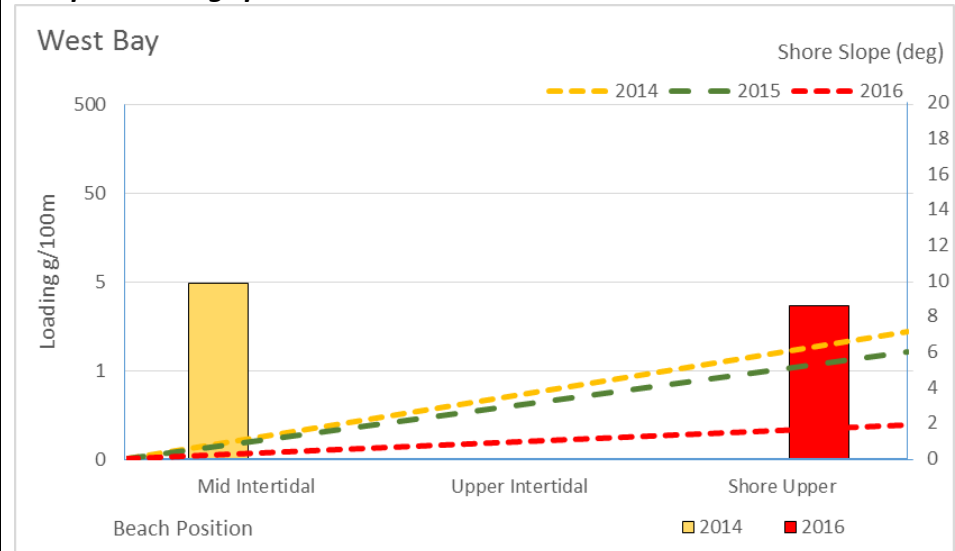


[2016 shore widths estimated]

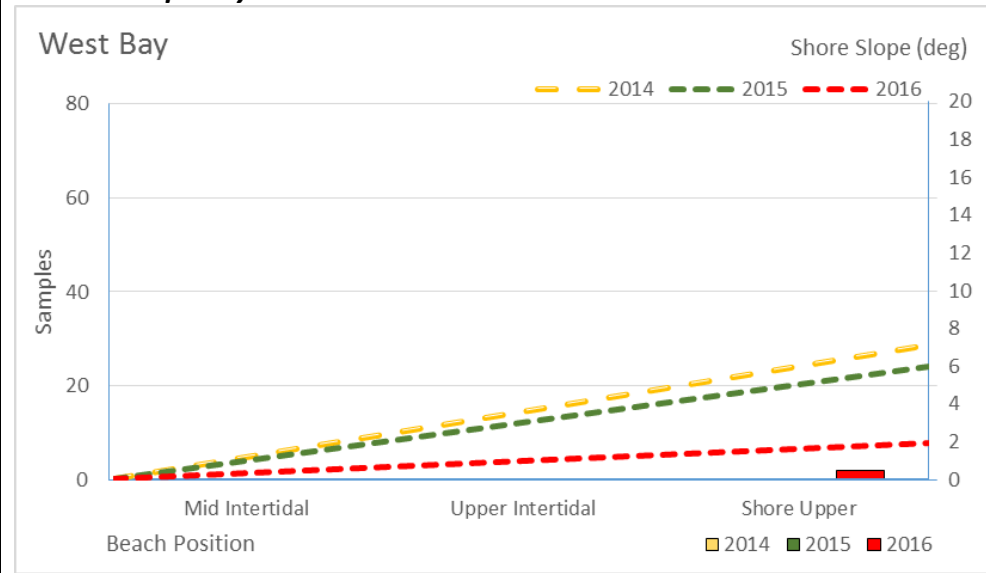
### Asphaltite Frequency Chart



### Sample Loadings per 100m Chart

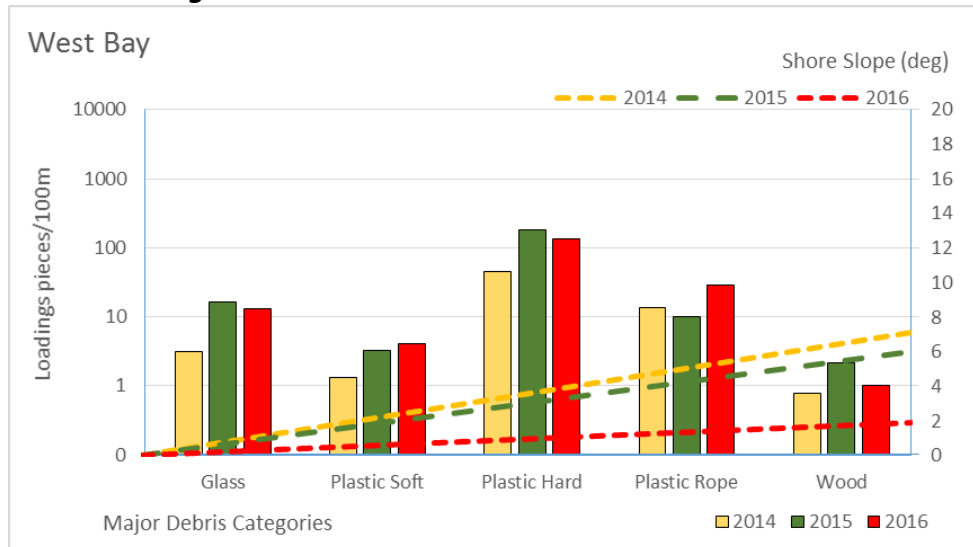


### Tarball Frequency Chart





## Debris Loadings Chart





## Beach details

Beach Name:	<b>Sandy River</b>	Beach ID:	<b>K3</b>	Priority:	1
Access point location (DD):	Latitude: -35.9509160444999 Longitude: 136.634295541	Maximum Beach survey length (km):	0.38		

## General description and information

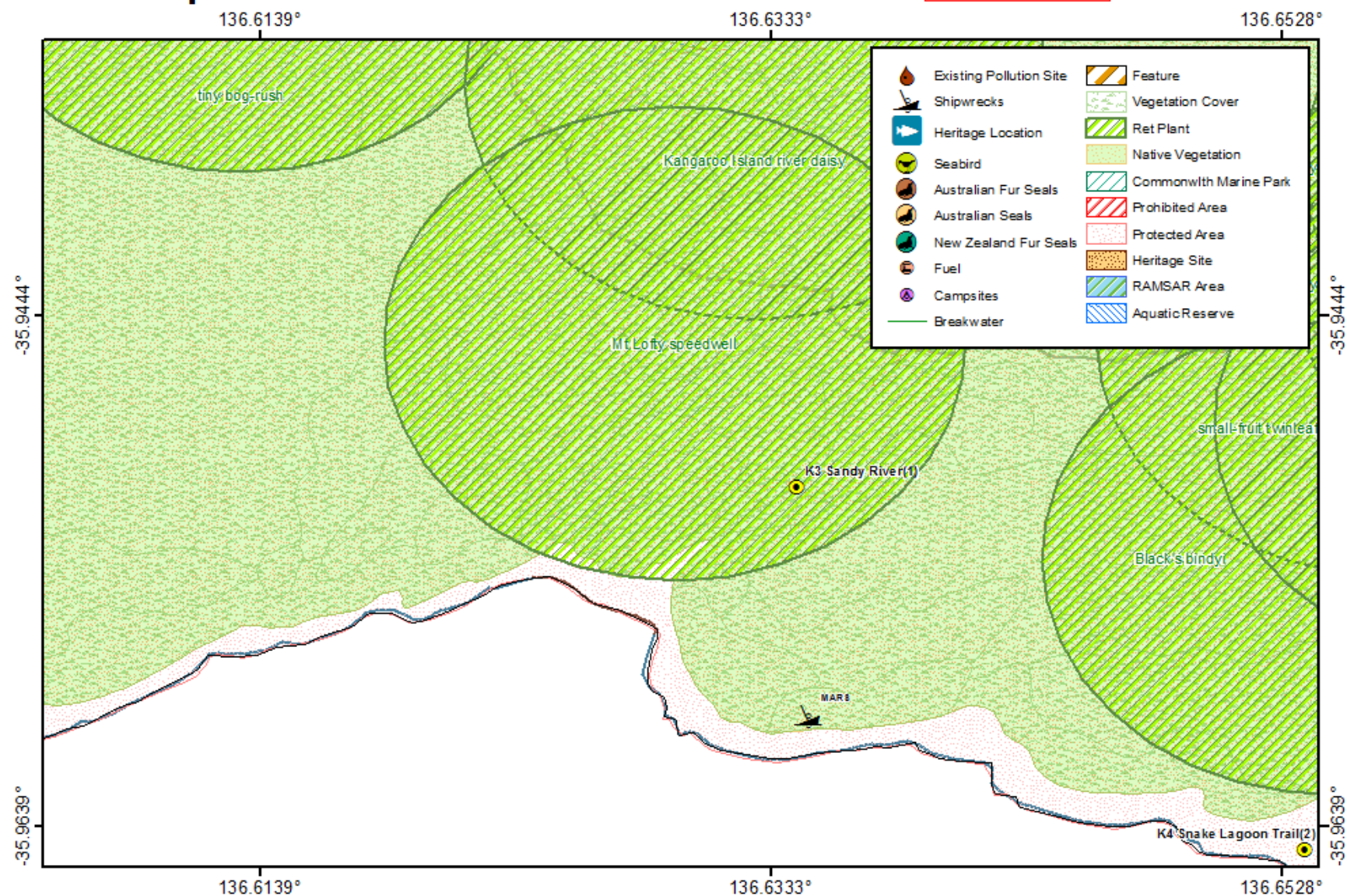
Beach exposure or shape:	<b><u>Concave (cove)/Straight/</u></b> Convex (headland)	Aspect:	N NE E SE S <b><u>SW</u></b> W NW	Likely beach gradient:	<b><u>Shallow/</u></b> Medium/Steep
Beach Width:	~40m	Likely substrate:	Fine sand	Backshore type	Vegetated dunes, rocky ledge
General description:	No info available online				
Beach classification	Wave dominated reflective beach				
General information:	No info available online				
Permits and access:	<p>Turnoff from West Bay Rd leads to small car park. Roads were heavily corrugated. The walking trail from the beach to the car park is approximately 1 km long.</p> <p>Kangaroo Island's parks offer a range of camping options. Permits are required and camping is allowed only in designated areas. For permits and bookings for camping in Flinders Chase National Park phone Flinders Chase Visitor Centre on (08) 8559 7235. Permits for camping in Cape Gantheaume Conservation Park, Harveys Return or Antechamber Bay can be obtained through self-registration at the campgrounds. Bush trekking camping – please discuss with a ranger at the nearest park office.</p> <p>Flinders Chase National Park requires an entry fee, however, our fee was waived due to the purpose of our trip. We should check into the permits required for taking samples from national parks.</p> <p>This national park may require a sampling permit. See document titled “Updated Sampling Permit”</p> <p>(2015) – Zack spoke with the District Duty Officer (0477334898) who said West Bay rd will likely be closed for winter and won't open until late September. Said to call him back for update closer to date.</p>				



# OSRA Map

0 0.375 0.75 1.5 Kilometres

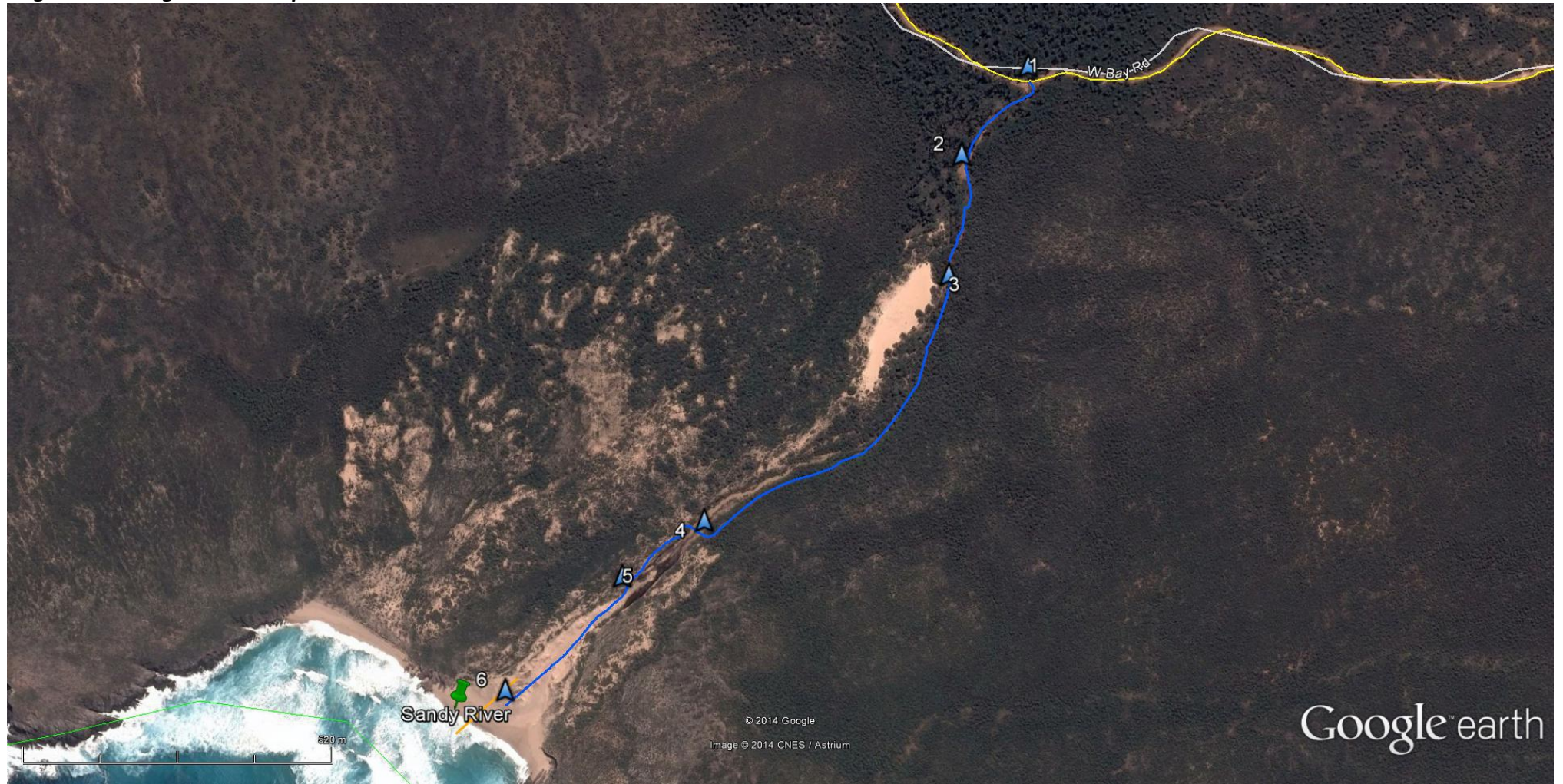
Warning: This map not to be used for navigation or measurement purposes.



Oil Spill Response Atlas (OSRA) map layers provided courtesy of the Australian Maritime Safety Authority (AMSA)



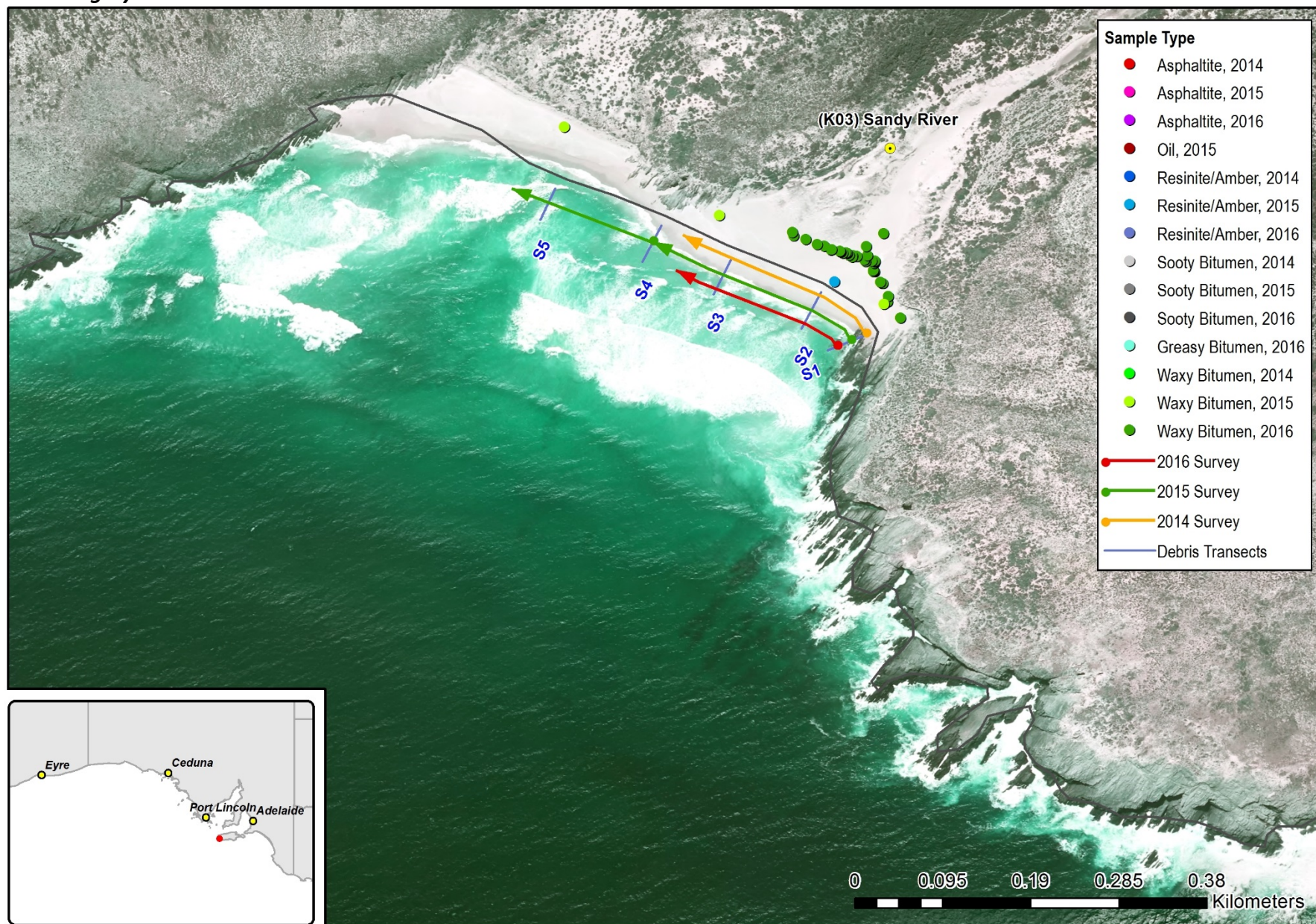
Large scale Google Earth map





# Beach Survey Records

## Transects and imagery



## Photographs



# Beach: Sandy River

*To Sea*

*To Shore*

*Along*

*Back*

2014



2015



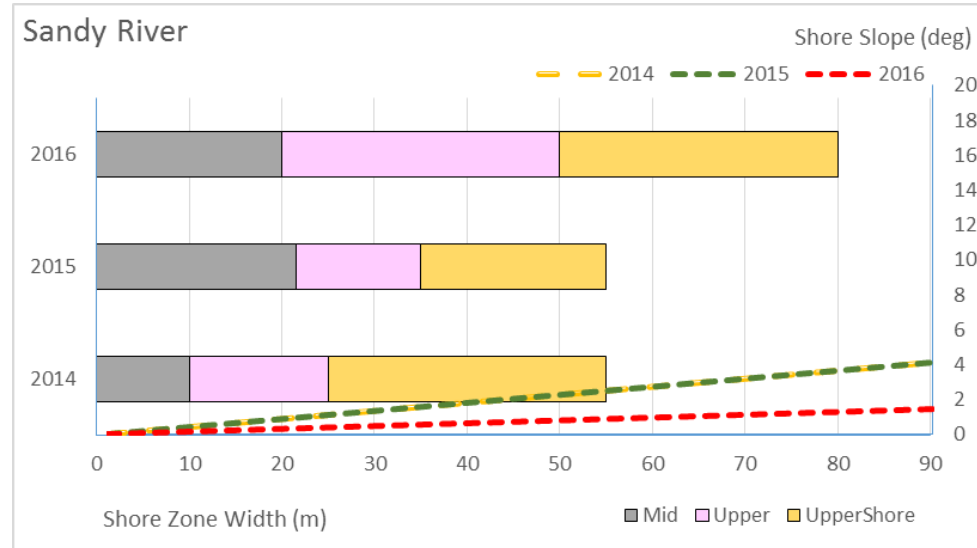
2016



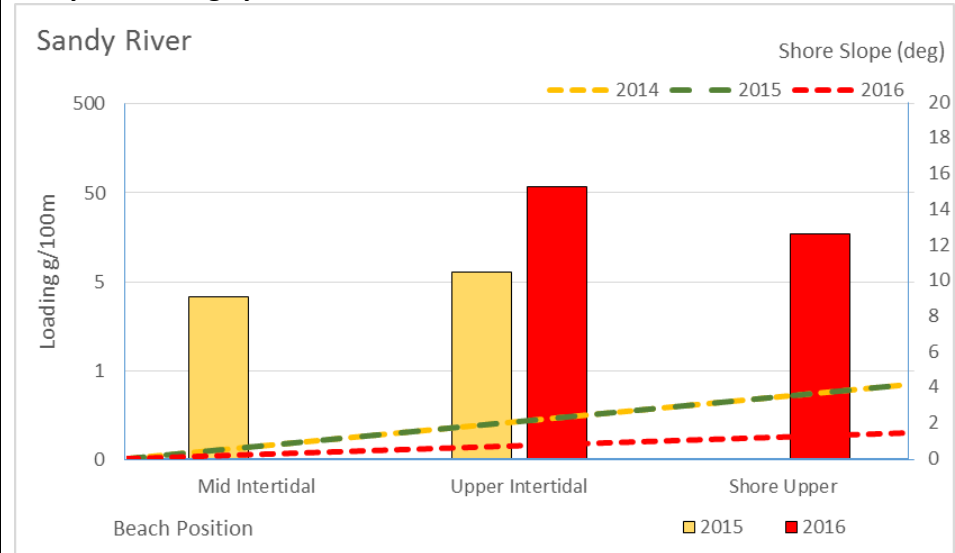
## Beach Summary Data

[sample types include asphaltite, tarball and resinite]

### Beach Character Chart



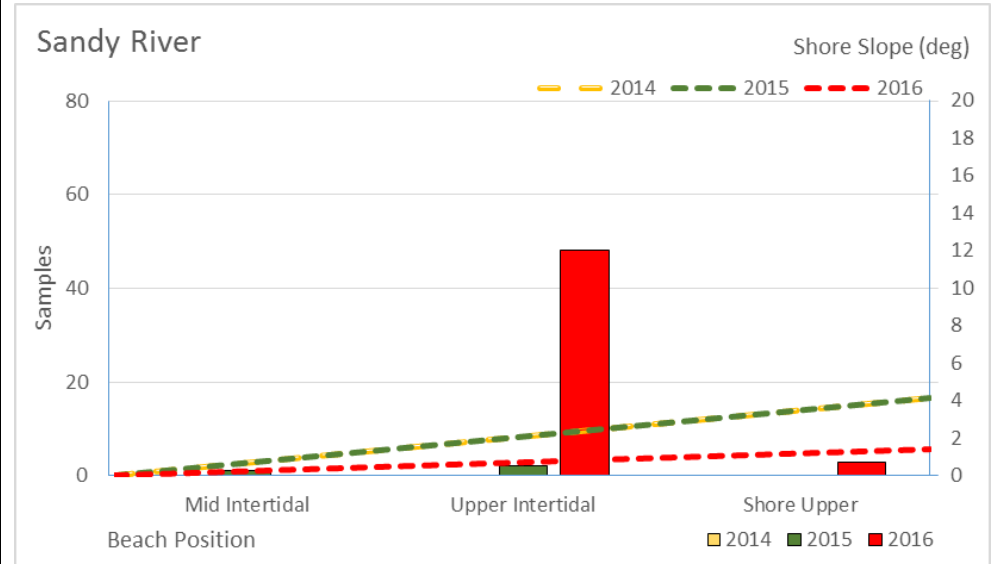
### Sample Loadings per 100m Chart



### Asphaltite Frequency Chart

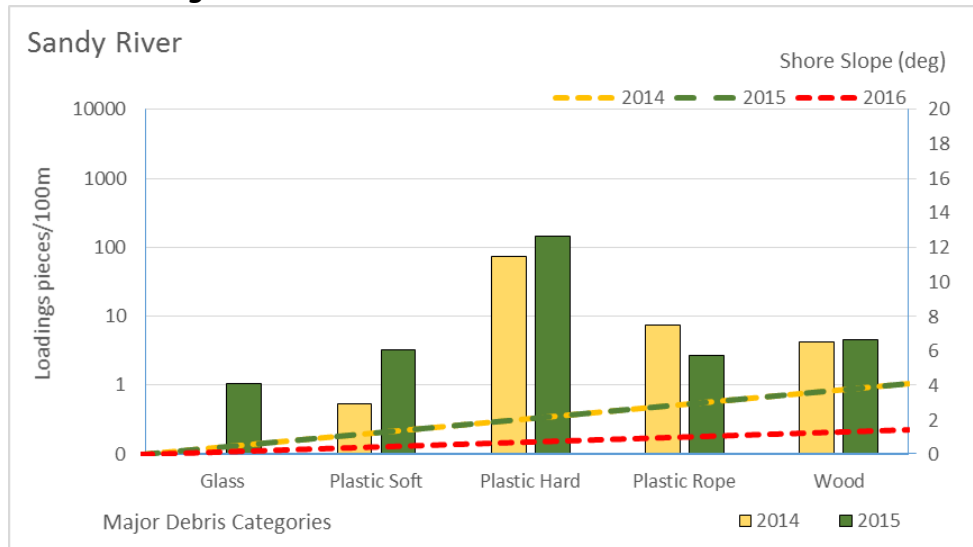
No asphaltites found on this beach

### Tarball Frequency Chart





## Debris Loadings Chart



## Beach details

Beach Name:	<b>Hanson Bay</b>	Beach ID:	<b>K5</b>	Priority:	1
Access point location (DD):	Latitude: -36.0166755075999 Longitude: 136.852954568	Maximum Beach survey length (km):	0.94		

## General description and information

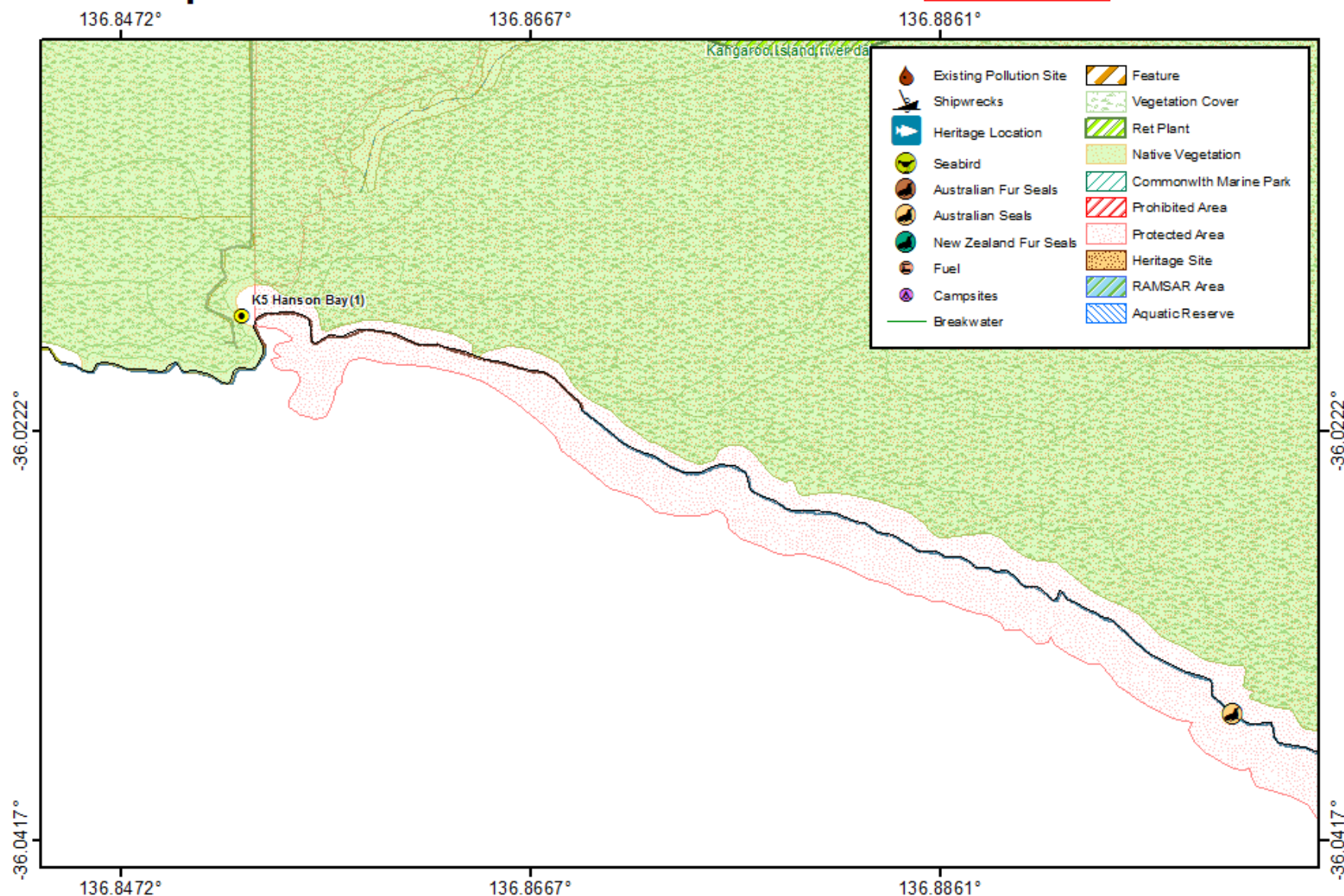
Beach exposure or shape:	<u>Concave (cove)</u> /Straight/Convex (headland)	Aspect:	N NE E <u>SE S</u> SW_W NW	Likely beach gradient:	<u>Shallow</u> /Medium/Steep
Beach Width:	~60m	Likely substrate:	Fine sand	Backshore type	Vegetated dunes, River
General description:	The westernmost beach in the bay is KI-128, a 60 m long pocket of sand backed by steep, 50 m high bluffs and fronted by a 50 m wide platform, which has been breached on its eastern side to permit waves to reach the small beach.				
Beach classification	Wave dominated Reflective, rhythmic bar and beach				
General information:	A permanent rip drains out of the breach.				
Permits and access:	<p>Easy access with heavily used roads and parking area west of the river mouth.</p> <p>Kangaroo Island's parks offer a range of camping options. Permits are required and camping is allowed only in designated areas. For permits and bookings for camping in Flinders Chase National Park phone Flinders Chase Visitor Centre on (08) 8559 7235. Permits for camping in Cape Gantheaume Conservation Park, Harveys Return or Antechamber Bay can be obtained through self-registration at the campgrounds. Bush trekking camping – please discuss with a ranger at the nearest park office.</p> <p>(2015) – District Duty Officer (0477334898) said we won't have access problems from here to Pennington Bay.</p>				



# OSRA Map

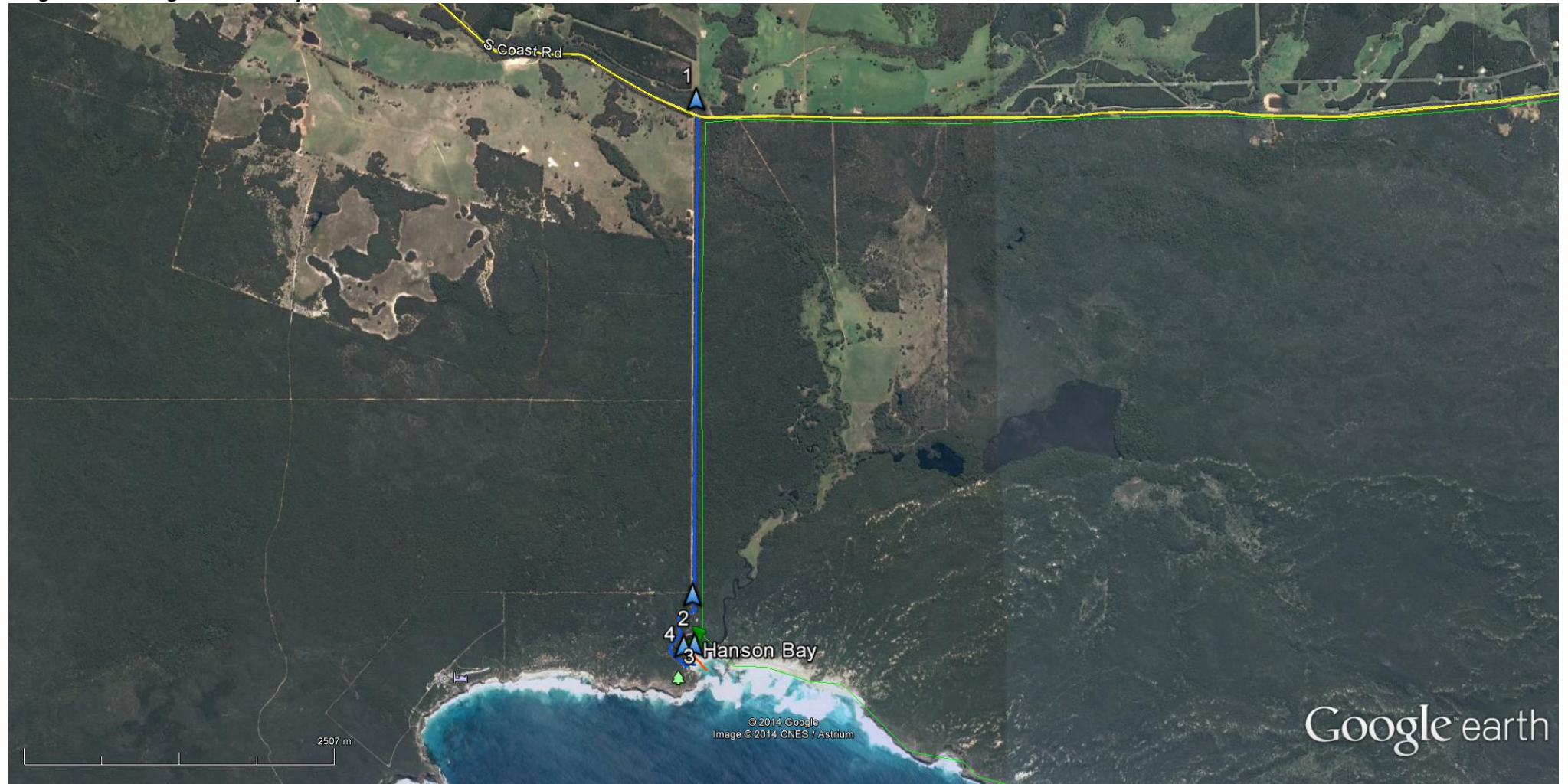
0 0.5 1 2 Kilometres

Warning: This map not to be used for navigation or measurement purposes.



Oil Spill Response Atlas (OSRA) map layers provided courtesy of the Australian Maritime Safety Authority (AMSA)

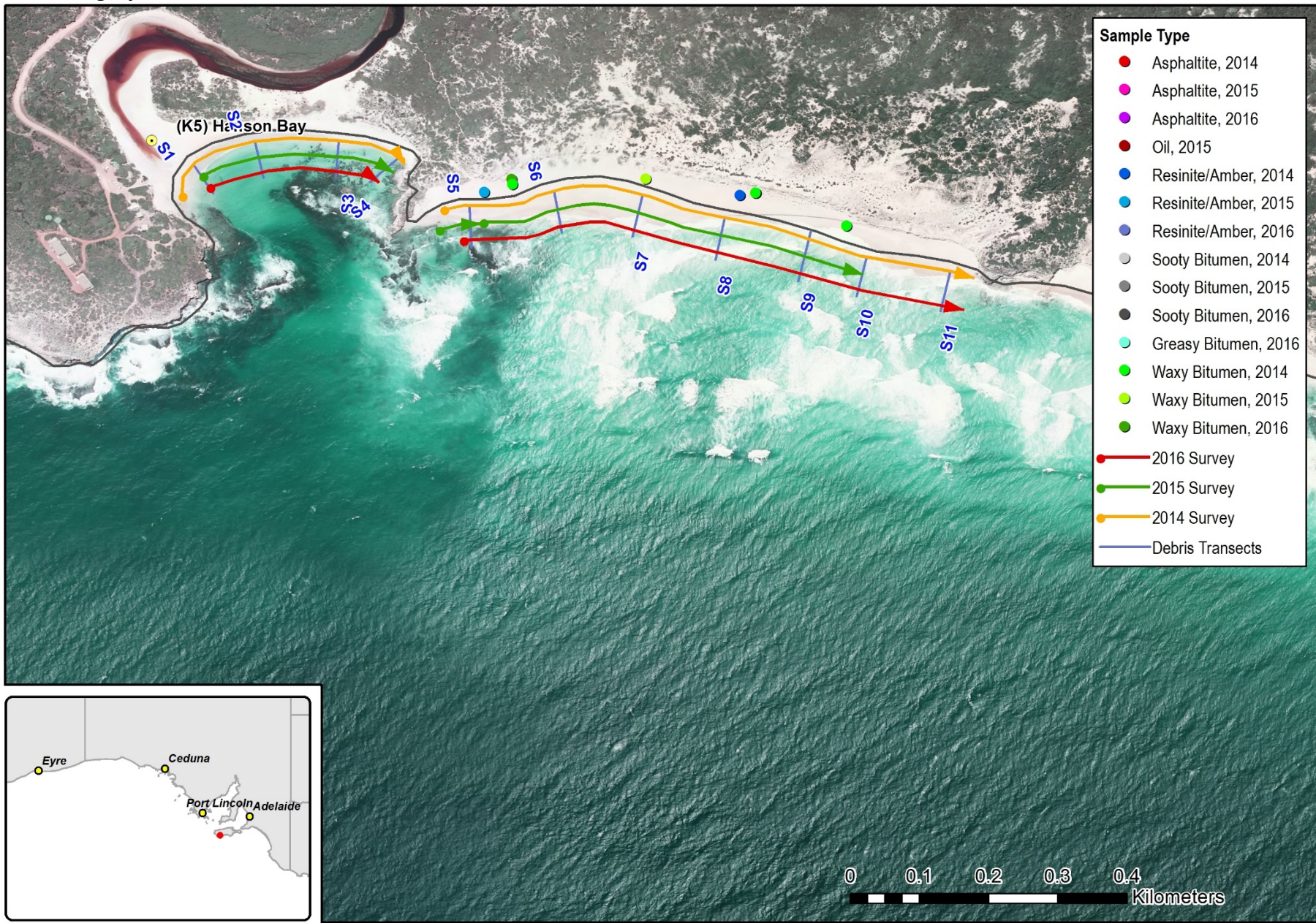
*Large scale Google Earth map*





Beach Survey Records

Transects and imagery





# Beach: Hanson Bay

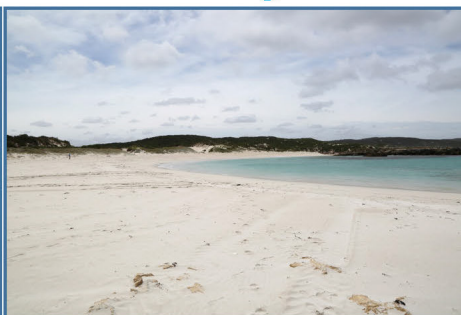
*To Sea*

*To Shore*

*Along*

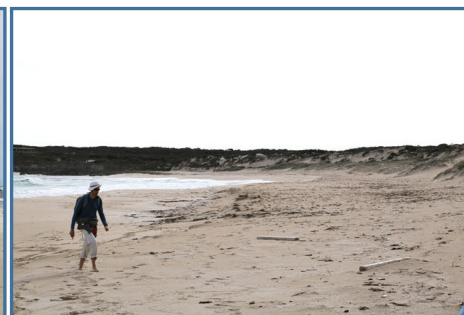
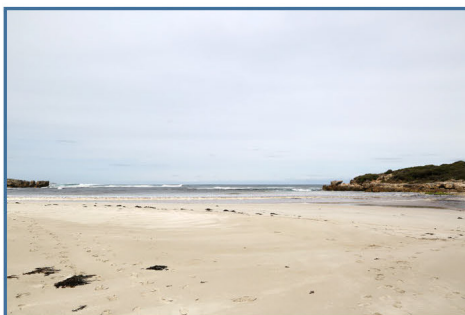
*Back*

2014



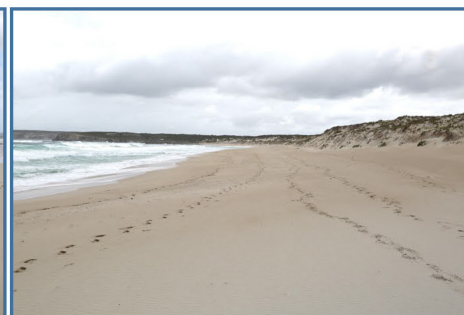
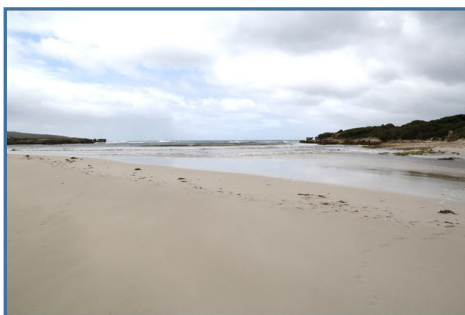
**Note:** 2014 start point was 85m before the start of 2015/16 transects

2015



**Note:** 2015 transect finished 125m shorter than 2014/16

2016

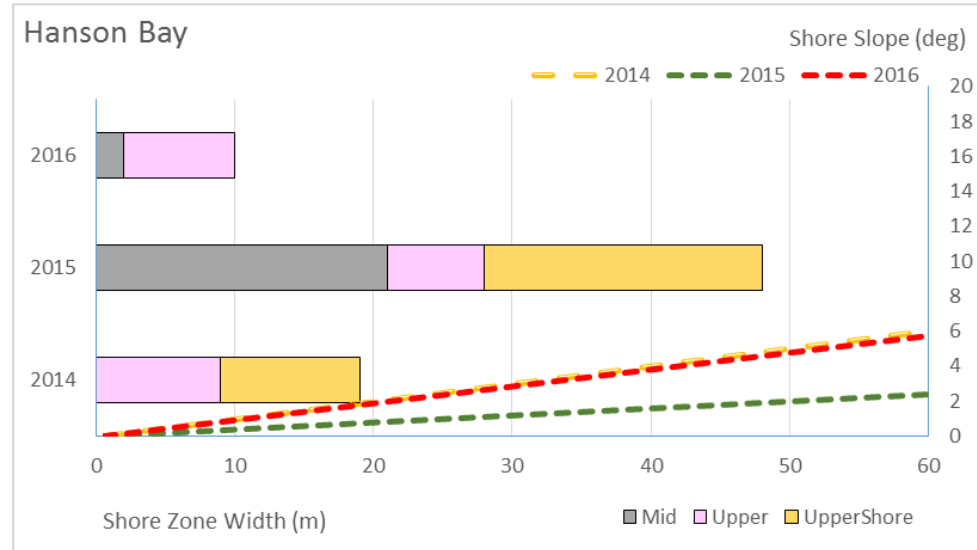




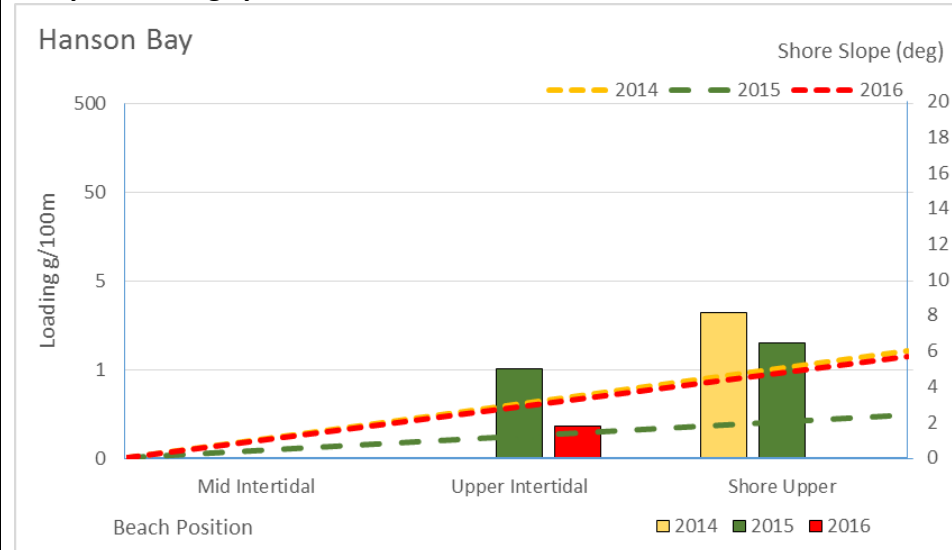
## Beach Summary Data

[sample types include asphaltite, tarball and resinite]

### Beach Character Chart



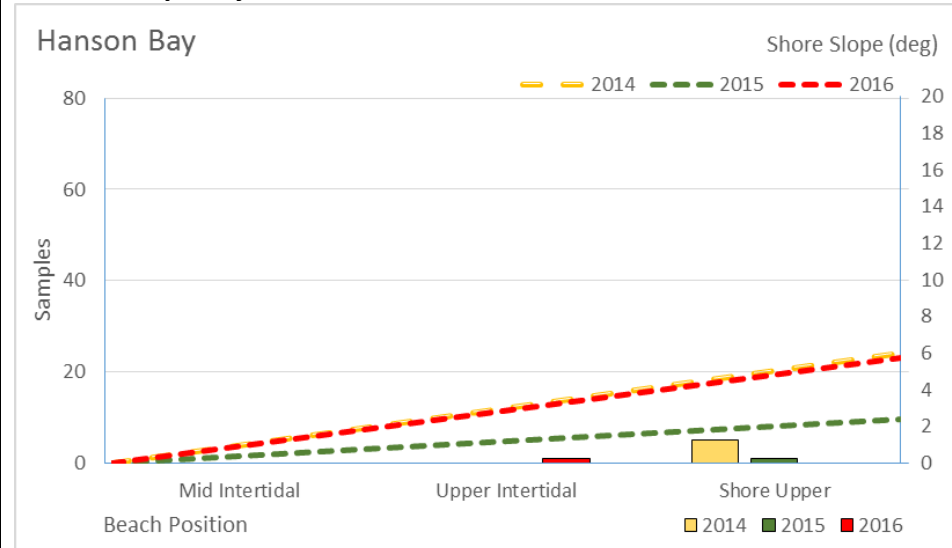
### Sample Loadings per 100m Chart



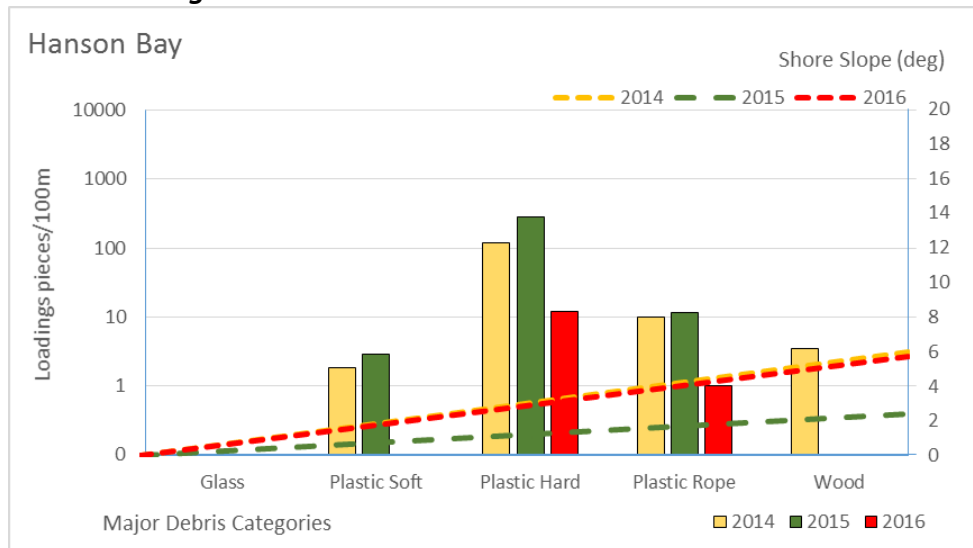
### Asphaltite Frequency Chart

No asphaltites found on this beach

### Tarball Frequency Chart



## Debris Loadings Chart



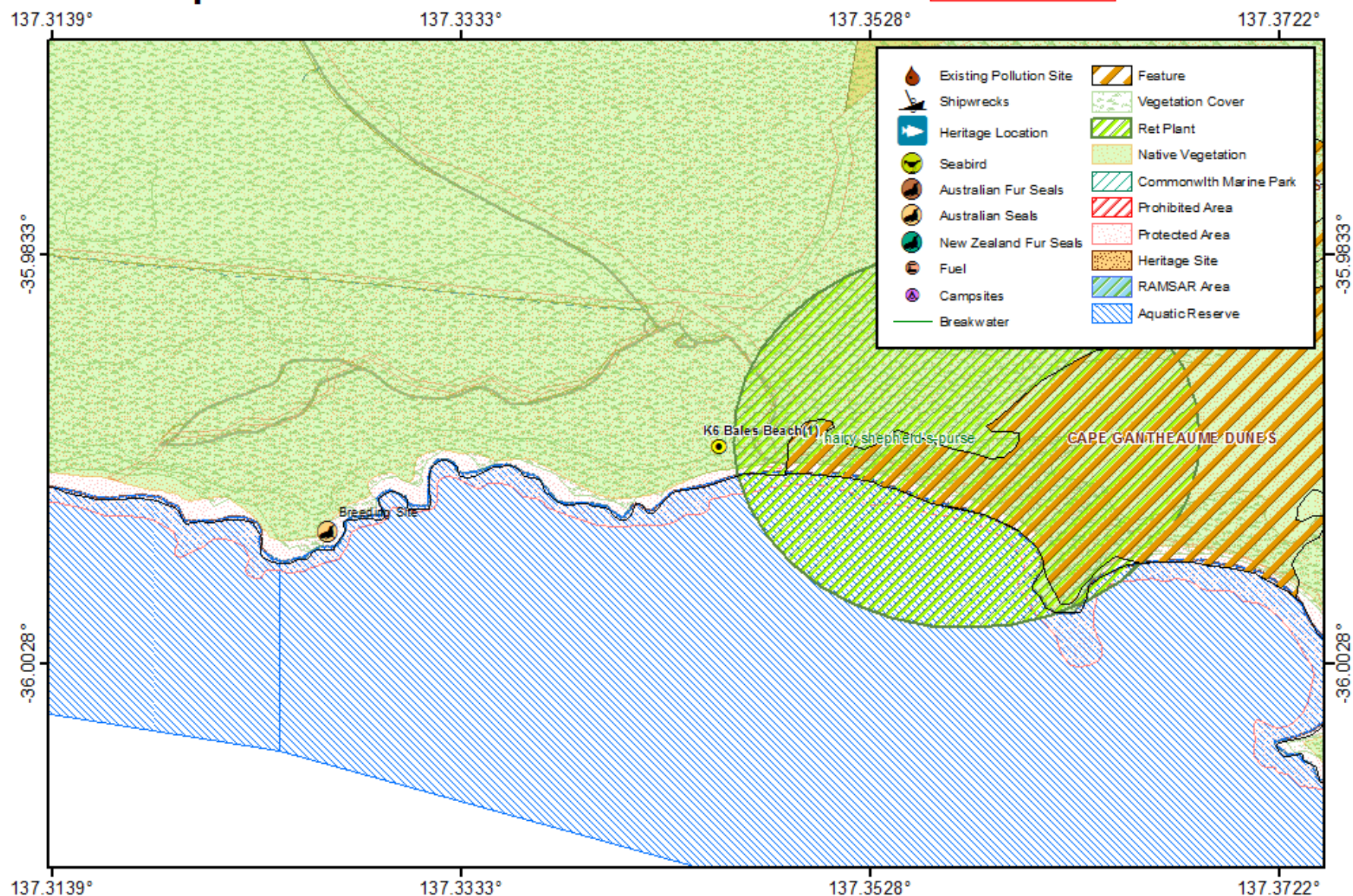


Beach details					
Beach Name:	Bales Beach		Beach ID:	K6	Priority: 1
Access point location (DD):	Latitude: -35.993878 Longitude: 137.349095		Maximum Beach survey length (km):	1.52	
General description and information					
Beach exposure or shape:	<u>Concave (cove)</u> /Straight/Convex (headland)	Aspect:	N NE E SE <u>S SW</u> W NW	Likely beach gradient:	<u>Shallow</u> /Medium/Steep
Beach Width:	~50m	Likely substrate:	Fine sand	Backshore type	Vegetated dunes
General description:	Bales Beach (1) (KI-93) lies 3 km east of the car park. It is a semi-circular shaped, 850 m long, low energy beach, bordered by prominent headlands protruding 300 m seaward, with reefs occupying much of the semi-enclosed bay, lowering waves at the shore to less than 1 m.				
Beach classification	Wave dominated reflective, rhythmic bar and beach				
General information:	The exposed southern coastline of Kangaroo Island is subject to high wave energy. Offshore reefs support a wide variety of fish and plant life. The reserve includes sandy beaches and foredunes, on which sea lions can be seen basking in the sun or swimming in the surf. To the west of Seal Bay, rocky coves under sheer cliffs up to 100 metres high provide sea lions with a habitat suitable for breeding and nursing pups.				
Permits and access:	<p>Bales Beach is one of the few accessible surfing beaches along the south coast of the island. Turn off S Coast Road onto Seal Bay Rd, follow to the beach. It is located just 1 km off the Seal Beach Road and has a small car park providing access to the main beach (KI-95) but no other facilities.</p> <p>Kangaroo Island's parks offer a range of camping options. Permits are required and camping is allowed only in designated areas. For permits and bookings for camping in Flinders Chase National Park phone Flinders Chase Visitor Centre on (08) 8559 7235. Permits for camping in Cape Gantheaume Conservation Park, Harveys Return or Antechamber Bay can be obtained through self-registration at the campgrounds. Bush trekking camping – please discuss with a ranger at the nearest park office. Public access to waters adjacent to Seal Bay is not permitted, as is fishing and the collection or removal of any marine organism.</p> <p>(2015) – District Duty Officer (0477334898) said we won't have access problems from here to Pennington Bay. Also spoke with Anthony Maguire (0885534423) and sent him an email so that he can let the necessary people know that we are coming.</p>				

# OSRA Map

0 0.5 1 2 Kilometres

Warning: This map not to be used for navigation or measurement purposes.





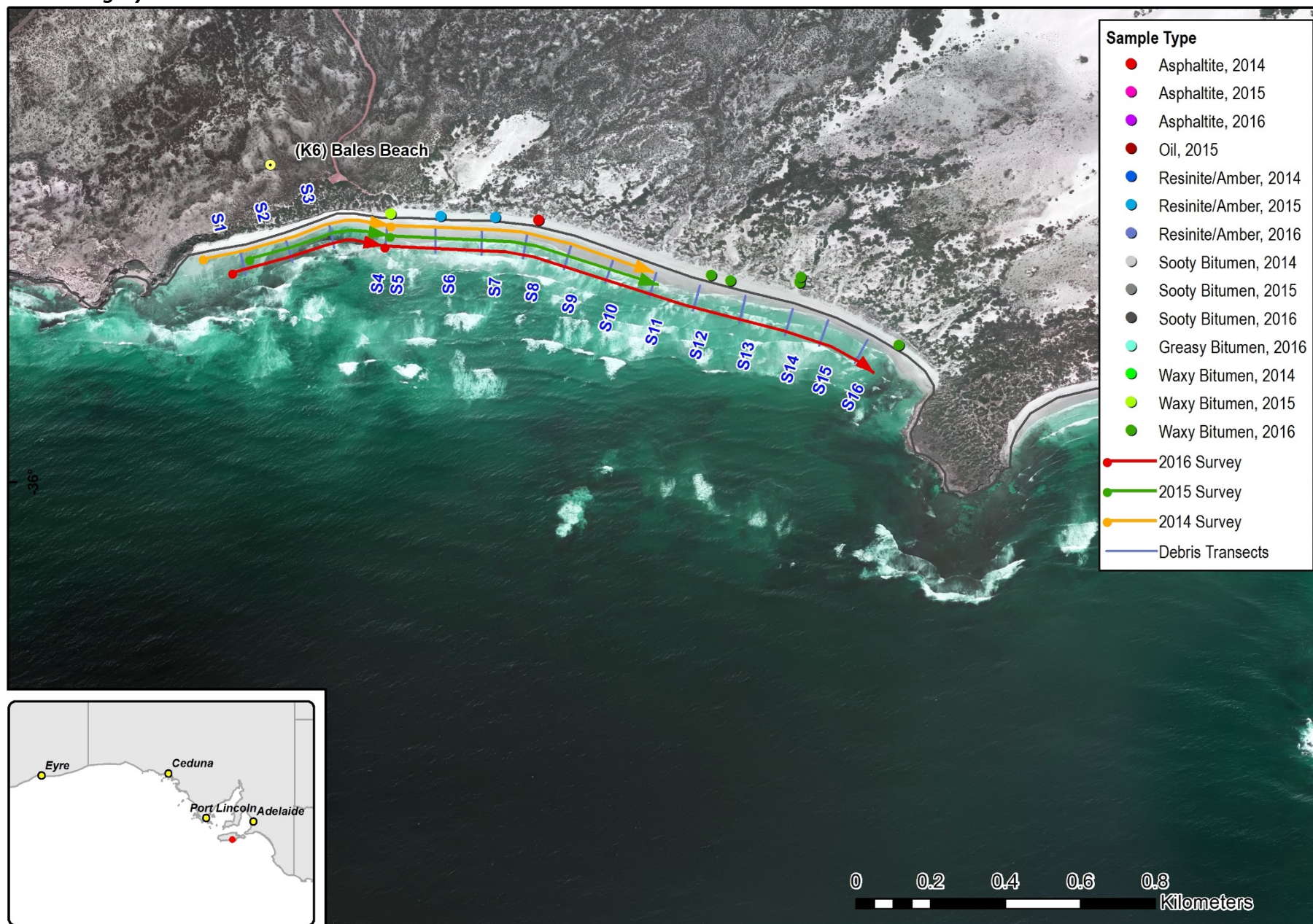
Large scale Google Earth map





# Beach Survey Records

## Transects and imagery





Photographs

# Beach: Bales Beach

*To Sea*

*To Shore*

*Along*

*Back*

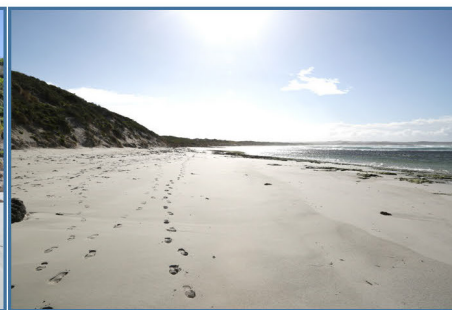
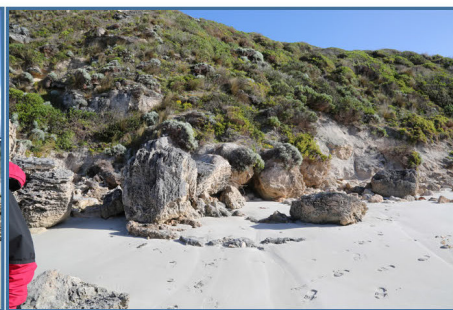
2014



2015



2016

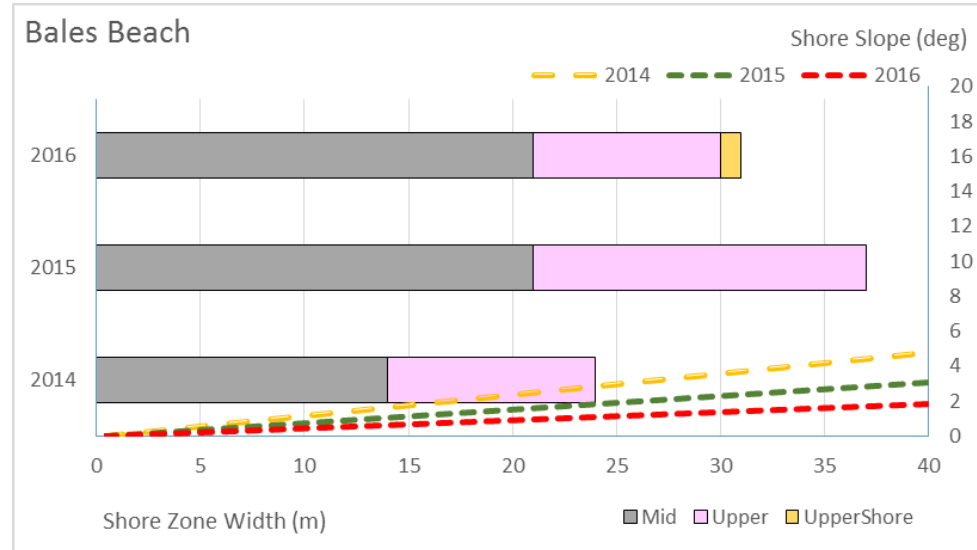


**Note:** 2016 transect was 570m longer than 2014/15

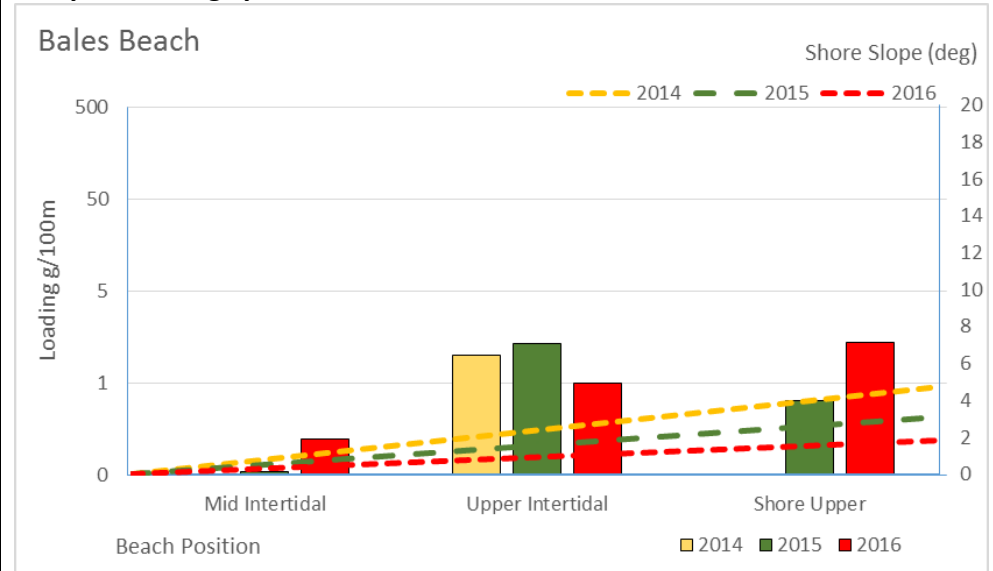
## Beach Summary Data

[sample types include asphaltite, tarball and resinite]

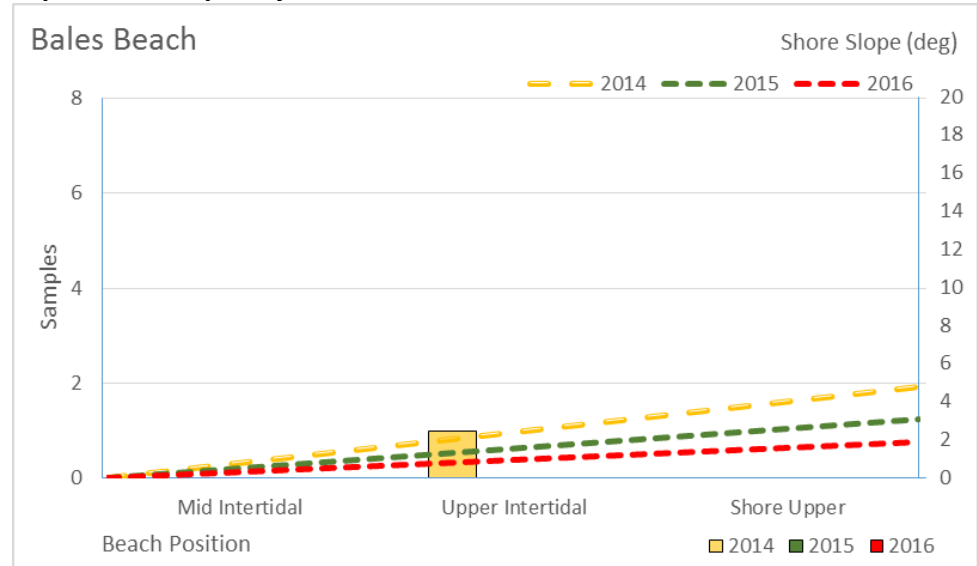
### Beach Character Chart



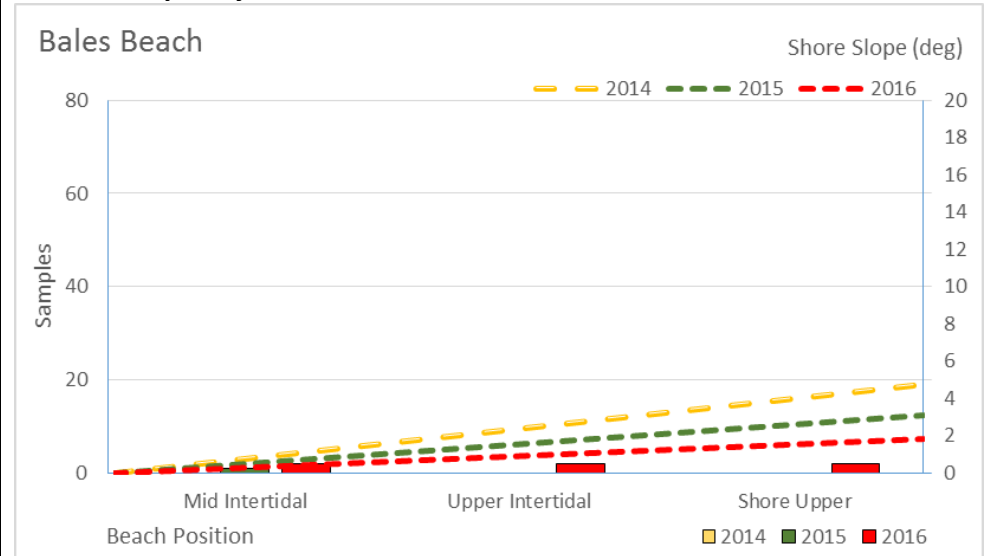
### Sample Loadings per 100m Chart



### Asphaltite Frequency Chart

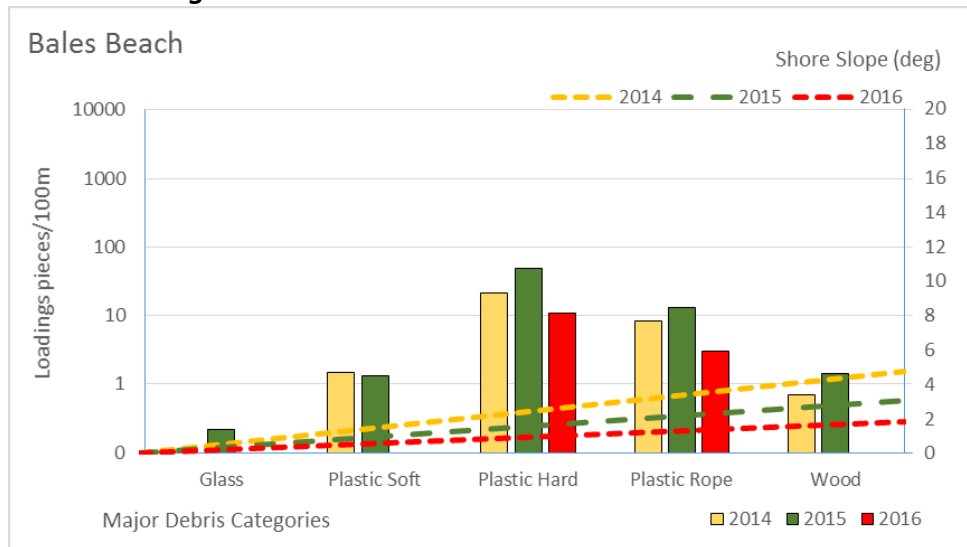


### Tarball Frequency Chart





## Debris Loadings Chart



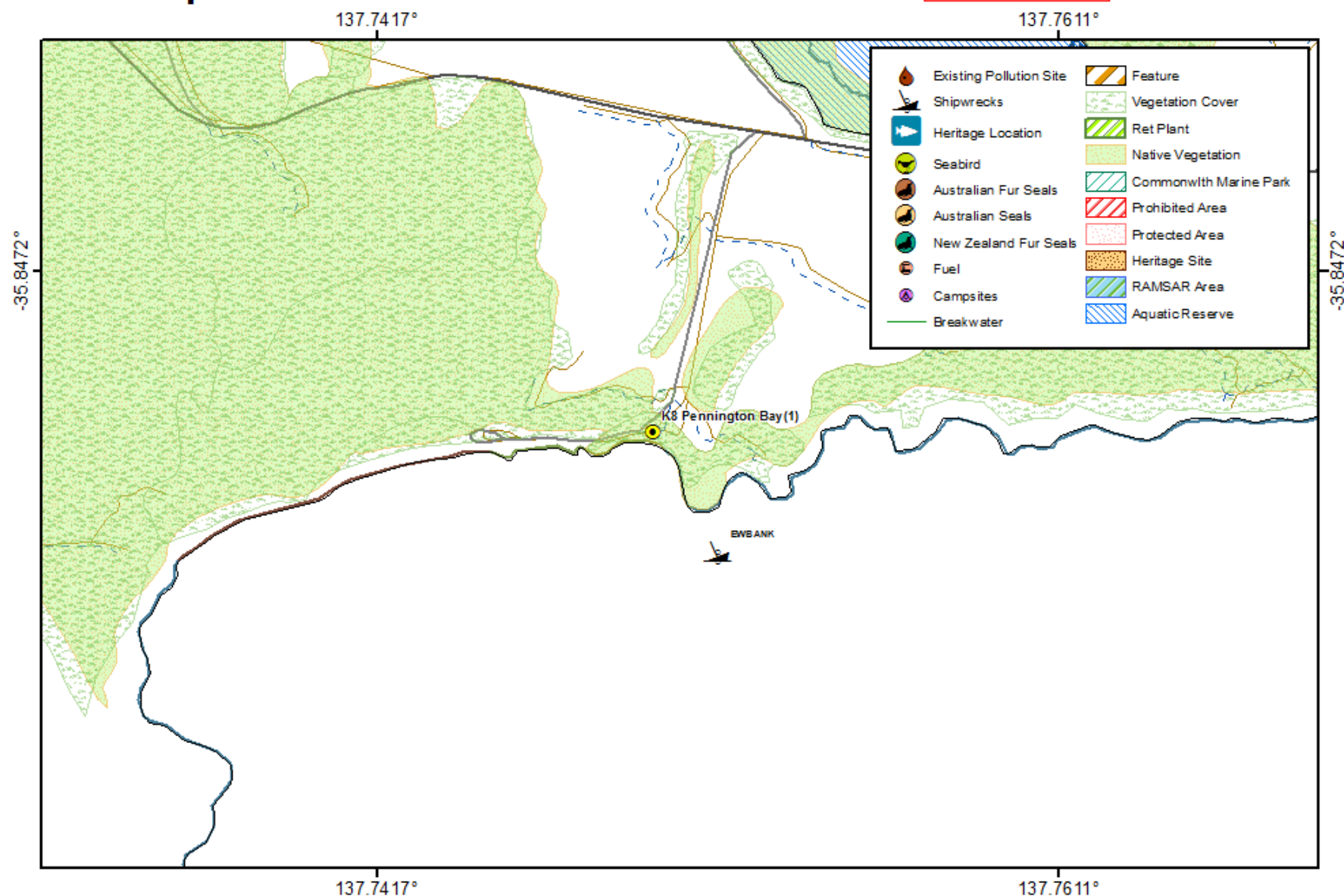
Beach details					
Beach Name:	Pennington Bay		Beach ID:	K8	Priority: 1
Access point location (DD):	Latitude: -35.852542 Longitude: 137.744207		Maximum Beach survey length (km):	0.59	
General description and information					
Beach exposure or shape:	<u>Concave (cove)/Straight/</u> Convex (headland)	Aspect:	N NE E SE <u>S</u> SW W NW	Likely beach gradient:	<u>Shallow/</u> Medium/Steep
Beach Width:	~30m	Likely substrate:	Fine sand	Backshore type	Vegetated dunes
General description:	The beach faces almost due south. It is 1.3 km long and bordered by prominent, 30 to 60 m high calcarenite headlands, with western Point Reynolds extending 3 km seaward.				
Beach classification	Wave dominated transverse bar and rip				
General information:	20 m high calcarenite bluffs, with fronting rock platforms and reefs, divide the beach into four sections				
Permits and access:	<p>It is located midway between the two major settlements of Kingscote and Penneshaw and is readily accessible off the main road that links the towns. A gravel road runs to the calcarenite bluffs above the centre of the beach, where there is a car park with steps leading down to the main swimming and surfing area</p> <p>Kangaroo Island’s parks offer a range of camping options. Permits are required and camping is allowed only in designated areas. For permits and bookings for camping in Flinders Chase National Park phone Flinders Chase Visitor Centre on (08) 8559 7235. Permits for camping in Cape Gantheaume Conservation Park, Harveys Return or Antechamber Bay can be obtained through self-registration at the campgrounds. Bush trekking camping – please discuss with a ranger at the nearest park office.</p> <p>(2015) – District Duty Officer (0477334898) said we won’t have access problems</p>				



# OSRA Map

0 0.275 0.55 1.1 Kilometres

Warning: This map not to be used for navigation or measurement purposes.



Oil Spill Response Atlas (OSRA) map layers provided courtesy of the Australian Maritime Safety Authority (AMSA)



*Large scale Google Earth map*

