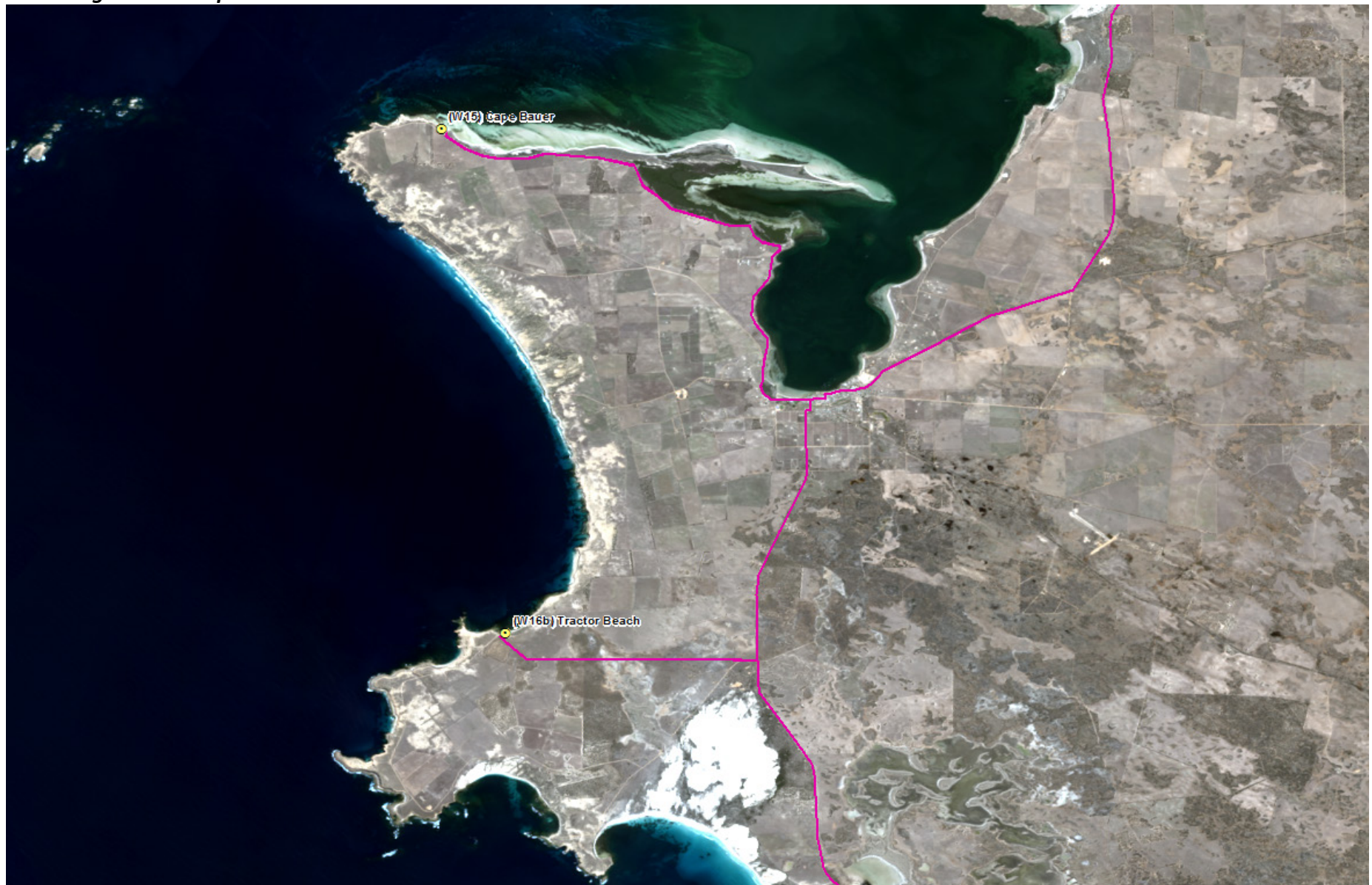


Large scale Google Earth map



Beach Survey Records

Transects and imagery



Beach: Tractor Beach

To Sea

To Shore

Along

Back

2014



2015



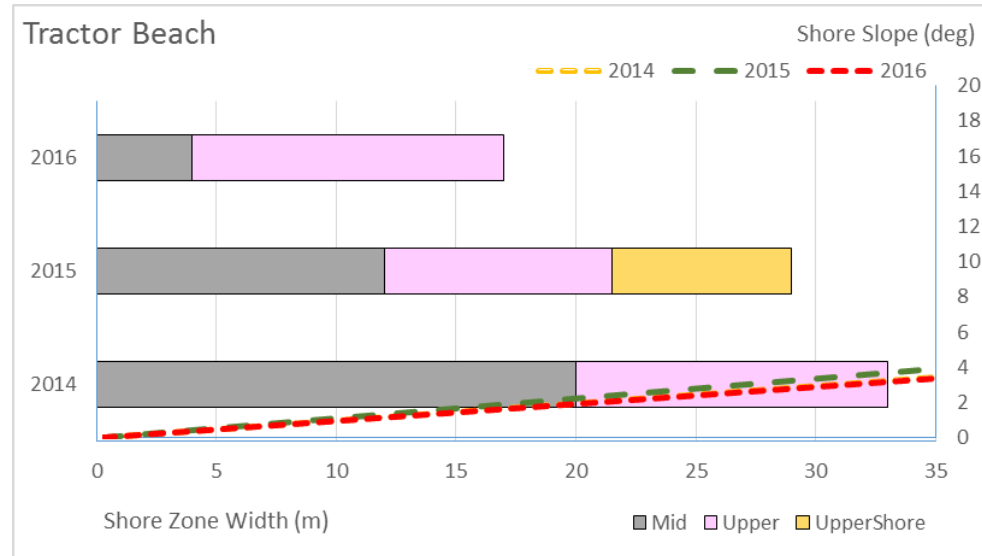
2016



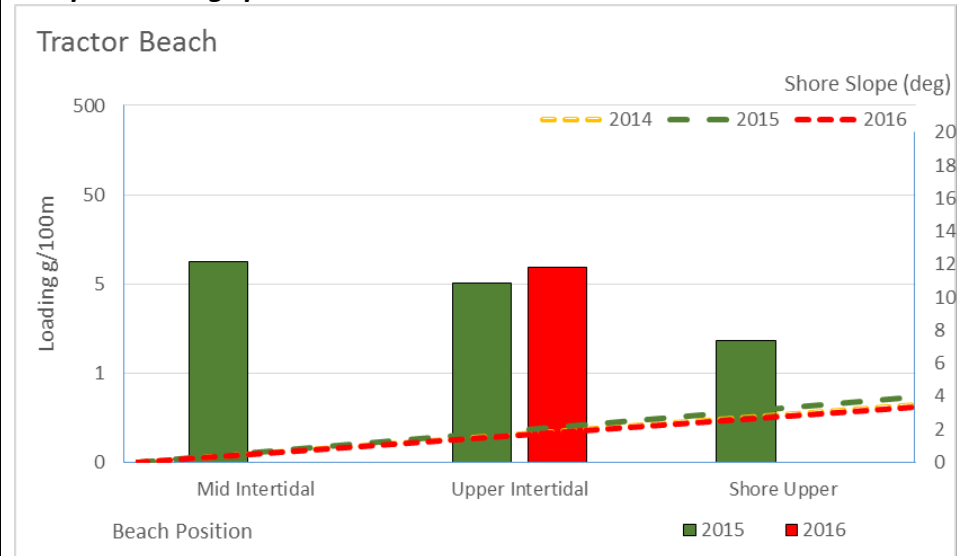
Beach Summary Data

[sample types include asphaltite, tarball and resinite]

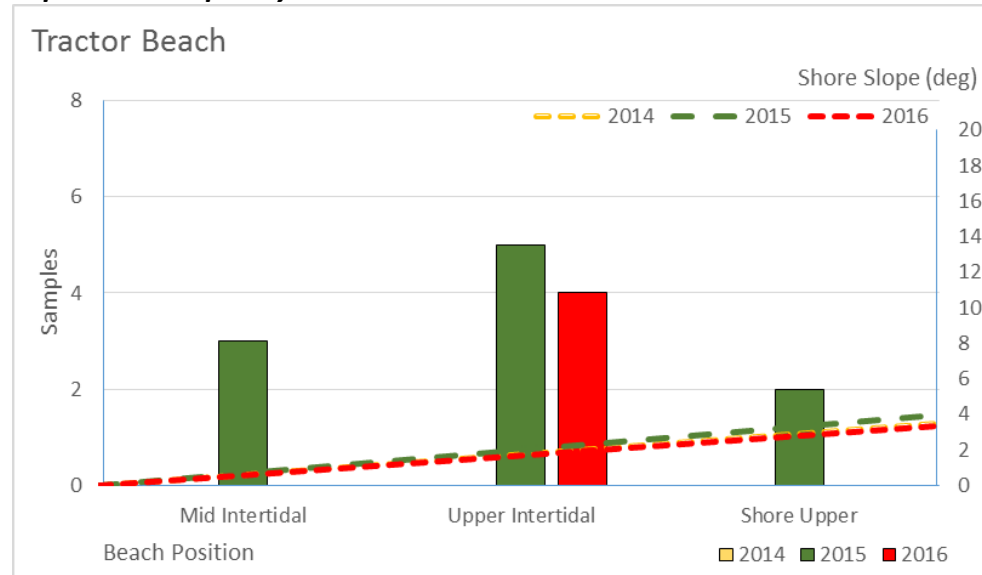
Beach Character Chart



Sample Loadings per 100m Chart



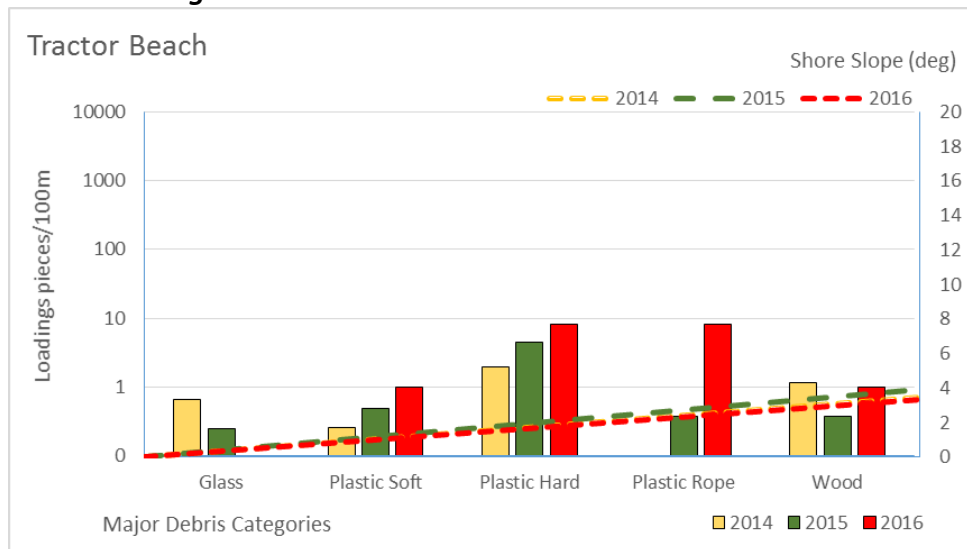
Asphaltite Frequency Chart



Tarball Frequency Chart

No tarballs found on this beach

Debris Loadings Chart

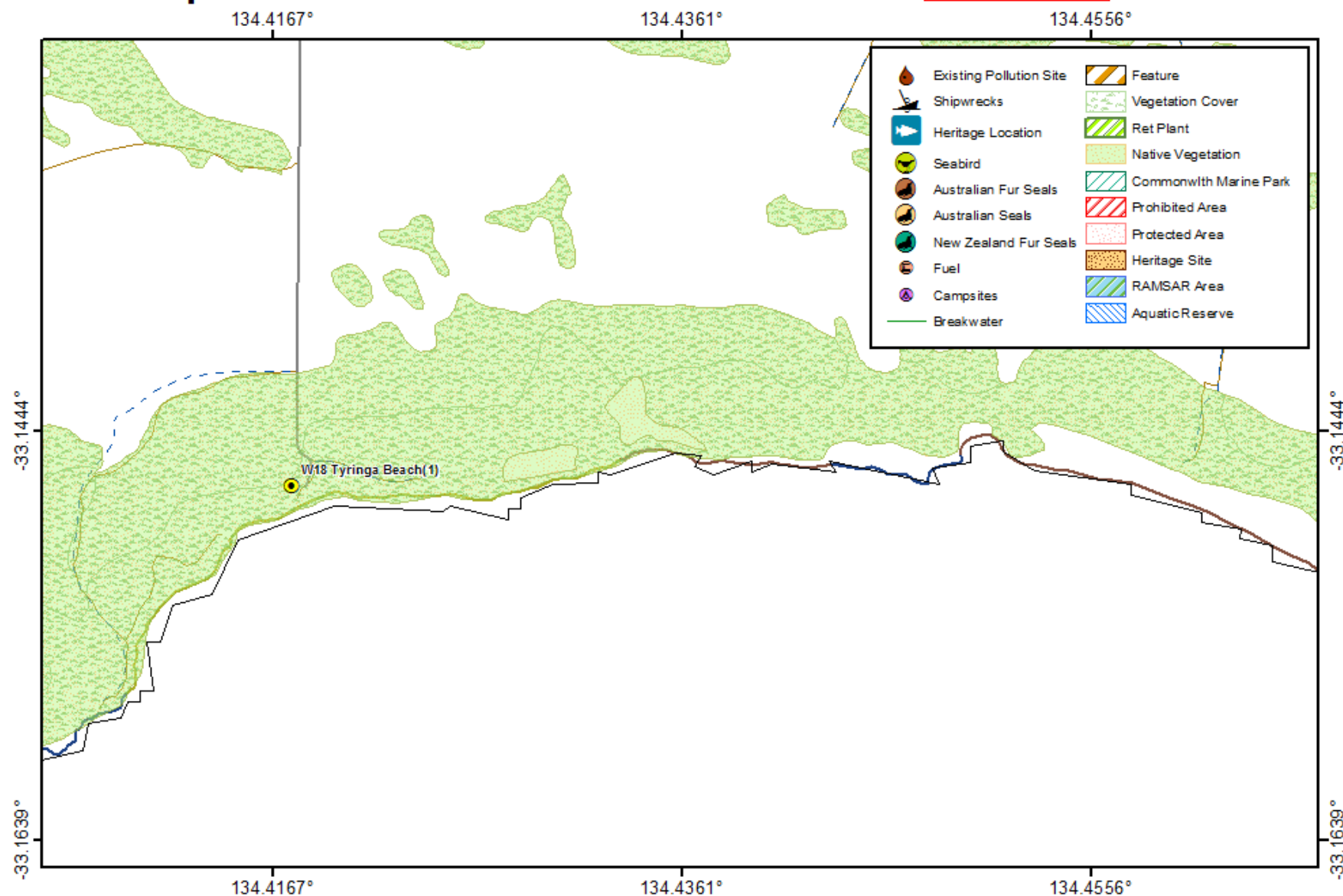


Beach details					
Beach Name:	Tyringa Beach		Beach ID:	W18	Priority: 1
Access point location (DD):	Latitude: -33.1469910603999 Longitude: 134.417584548		Maximum Beach survey length (km):	0.58	
General description and information					
Beach exposure or shape:	<u>Concave (cove)</u> /Straight/ <u>Convex (headland)</u>	Aspect:	N NE E <u>SE S</u> SW W NW	Likely beach gradient:	Shallow/ <u>Medium</u> / <u>Steep</u>
Beach Width:	~30m	Likely substrate:	Sand	Backshore type	Vegetated bluffs
General description:	Tyringa Beach (1083) is named after the backing farm. It is a 1 km sand beach, with the surf zone a mixture of exposed and deeper reefs, some extending 500 m off the beach.				
Beach classification	Wave dominated reflective beach				
General information:	A scenic section of coast accessible via the bluff-top tracks.				
Permits and access:	<p>I spoke with Louise (0886261108) who is the coastal marine officer from Cape Bauer to Sheringa Beach. She says we can drive in through Tyringa road. There may be gates because it goes through private property, but it is a publically accessible road so we just have to leave gates as we found them. There will be plenty of parking and visible tracks. It is a deep beach so we should not drive onto it. We can also drive in through Baird Bay, but it is more difficult to get to the beach from this direction.</p> <p>Very steep path down vegetated dunes onto the beach. Necessary to utilize hiking poles and descend slowly - Easy access at opposite end of beach.</p> <p>(2015) – Zack spoke with different person because Louise wasn't in. He said we won't have trouble accessing. He said to give Louise a call closer to date.</p>				

OSRA Map

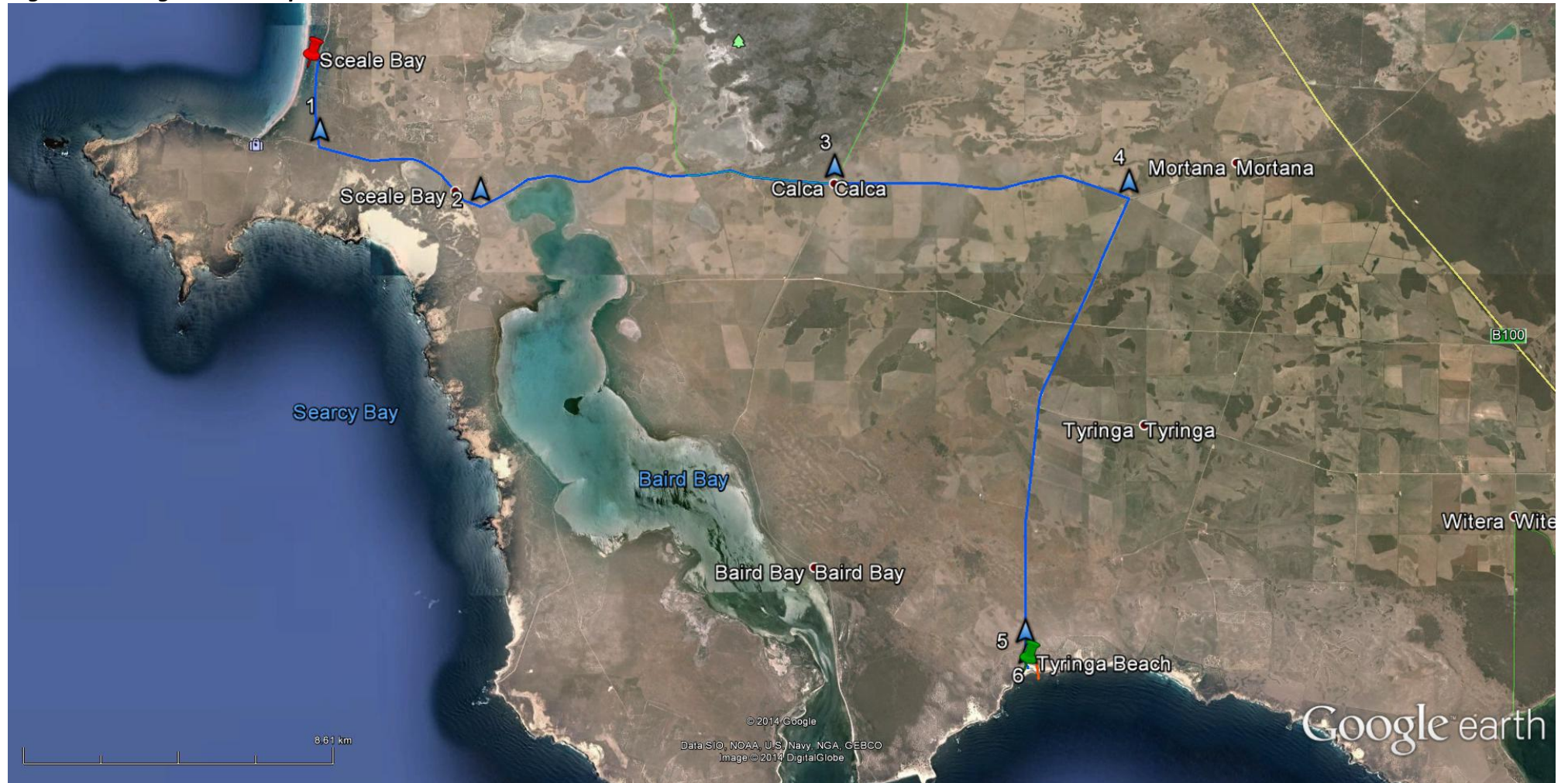
0 0.5 1 2 Kilometres

Warning: This map not to be used for navigation or measurement purposes.



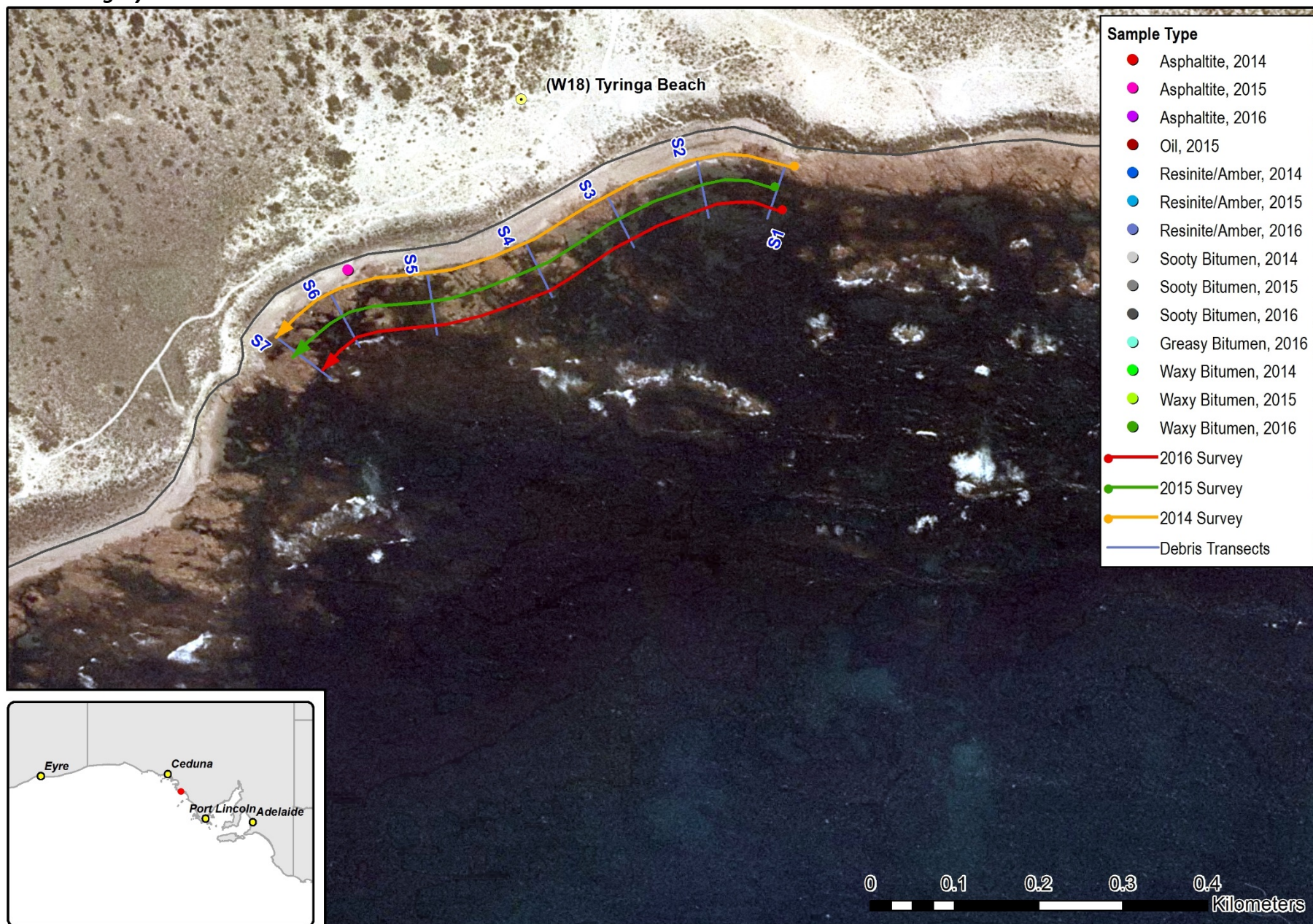
Oil Spill Response Atlas (OSRA) map layers provided courtesy of the Australian Maritime Safety Authority (AMSA)

Large scale Google Earth map



Beach Survey Records

Transects and imagery



Beach: Tyringa Beach

To Sea

To Shore

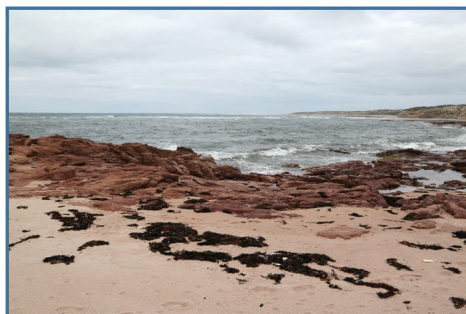
Along

Back

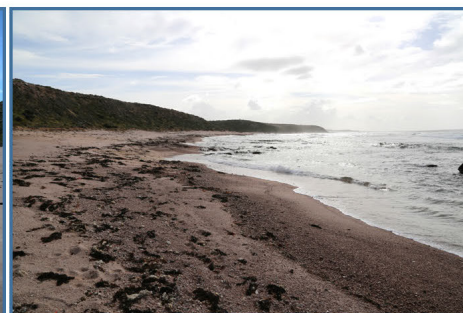
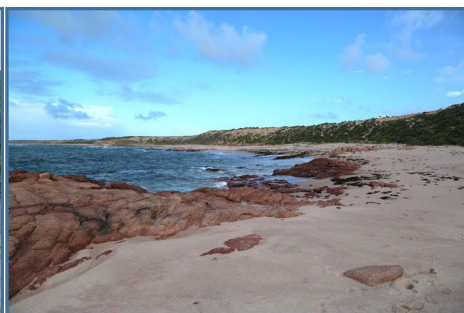
2014



2015



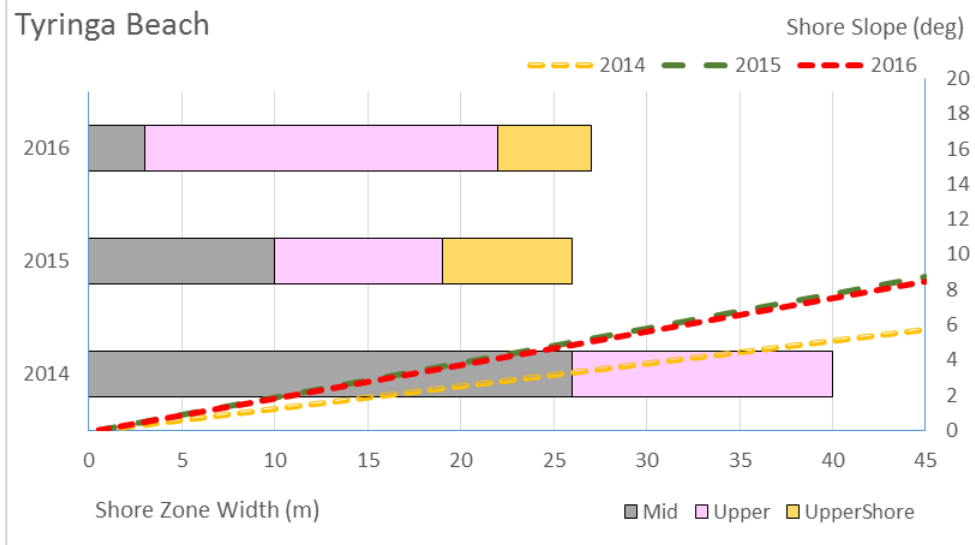
2016



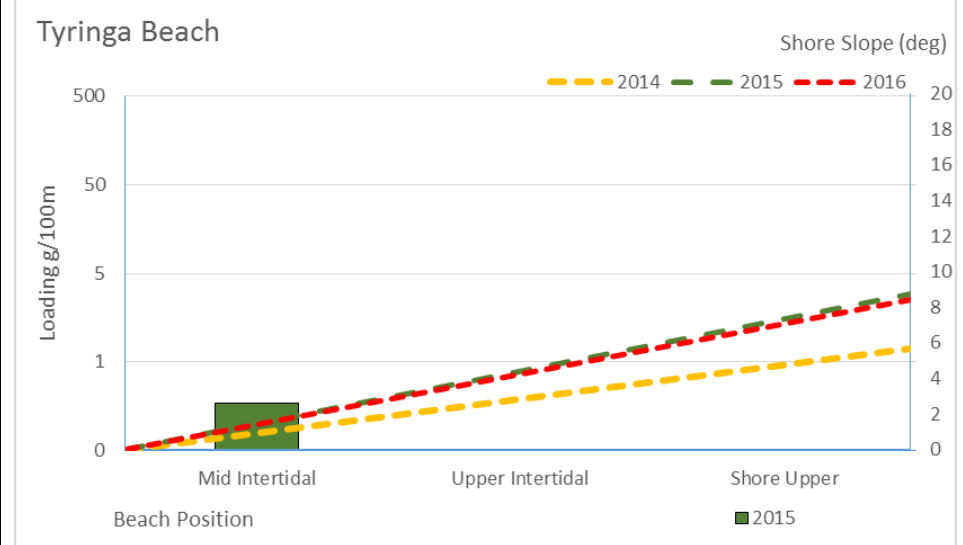
Beach Summary Data

[sample types include asphaltite, tarball and resinite]

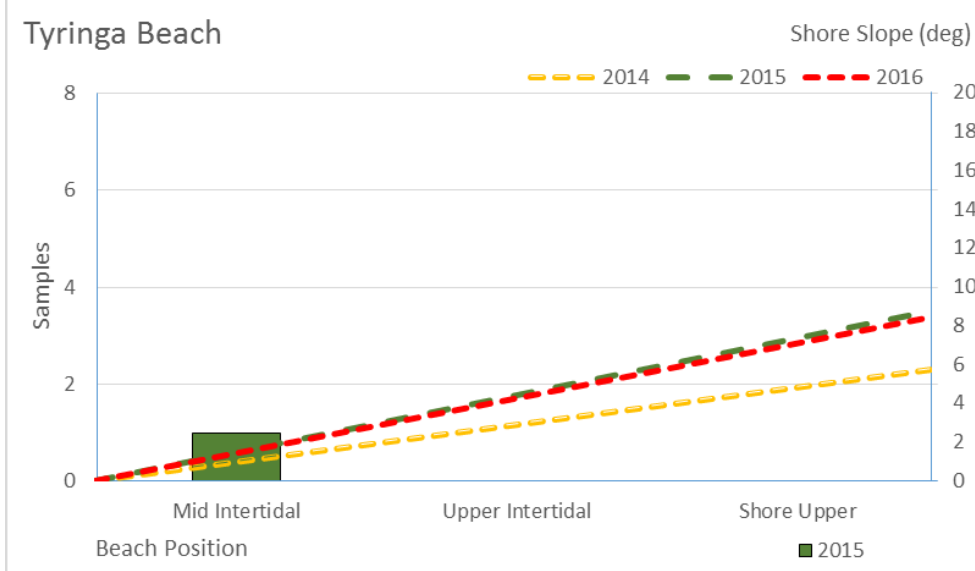
Beach Character Chart



Sample Loadings per 100m Chart



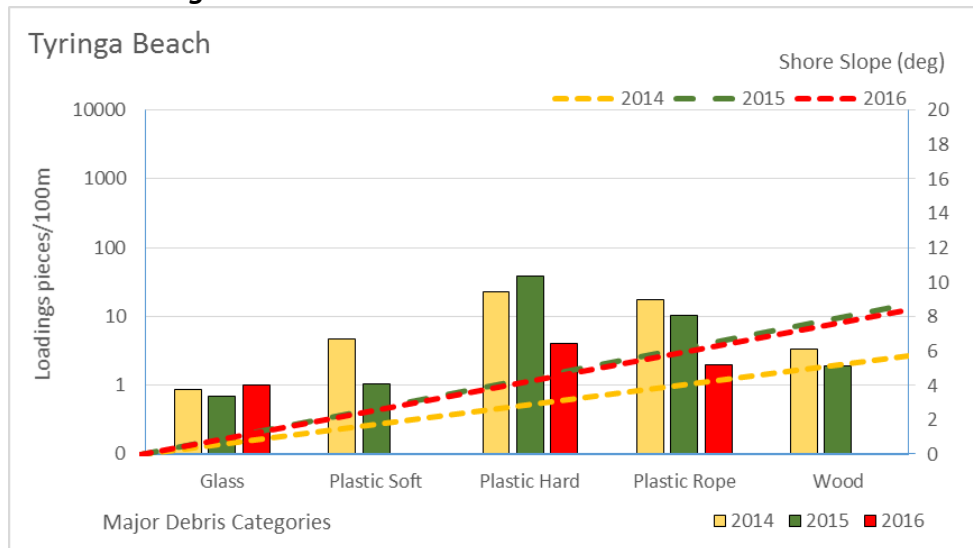
Asphaltite Frequency Chart



Tarball Frequency Chart

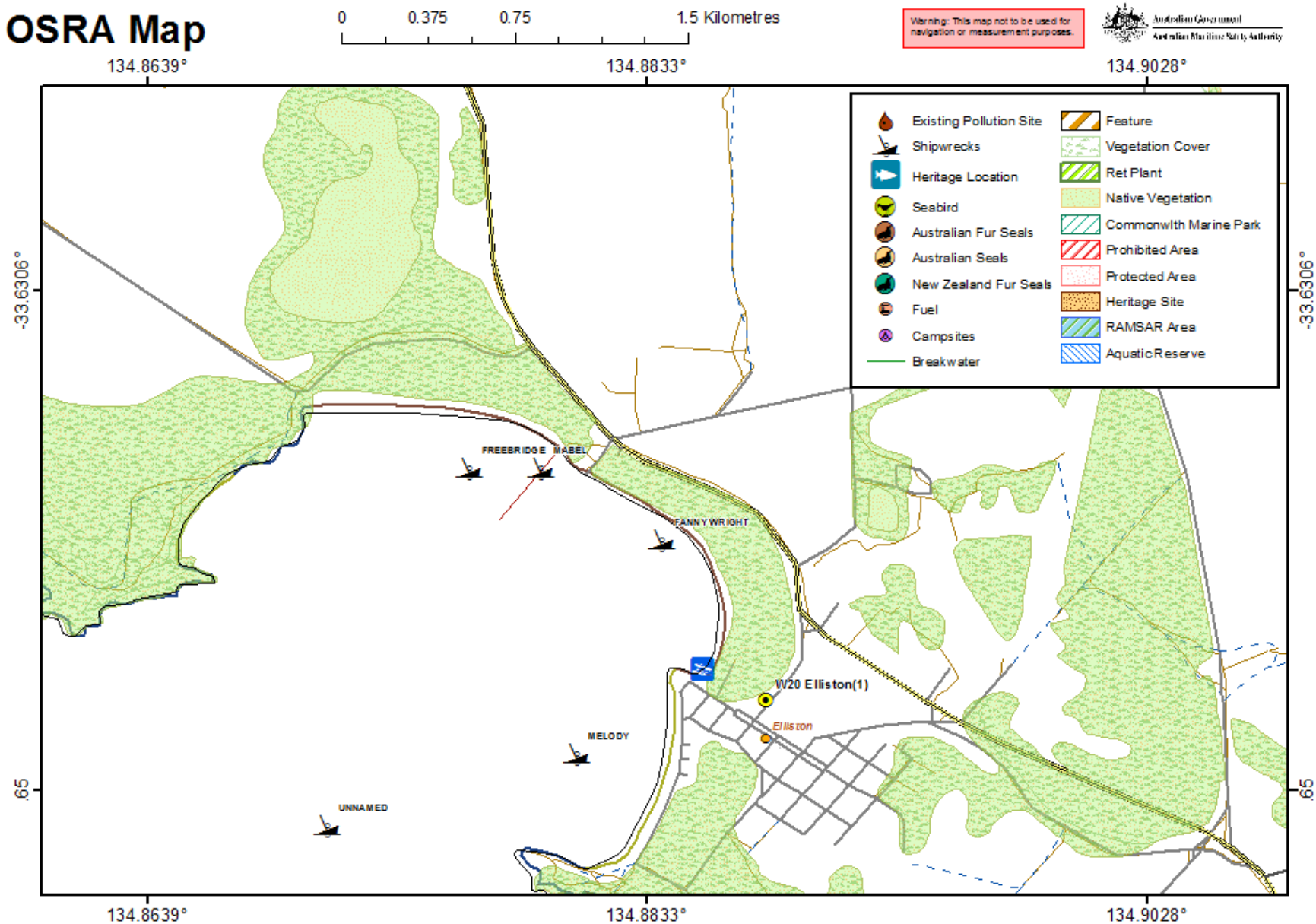
No tarballs found on this beach

Debris Loadings Chart



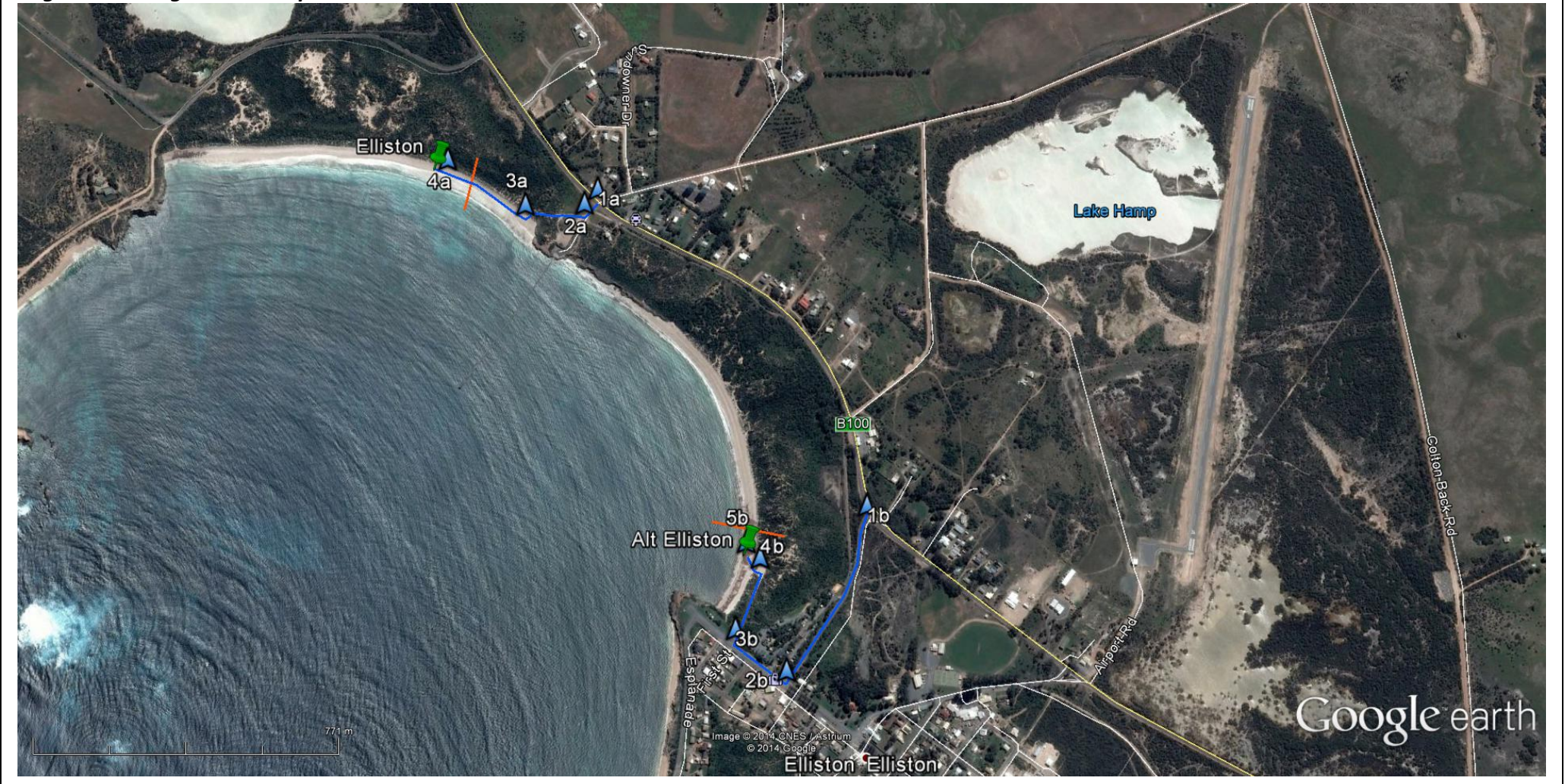
Beach details					
Beach Name:	Elliston		Beach ID:	W20	Priority: 1
Access point location (DD):	Latitude: -33.6464875146999 Longitude: 134.8879564		Maximum Beach survey length (km):	1	
General description and information					
Beach exposure or shape:	<u>Concave (cove)</u> /Straight/Convex (headland)	Aspect:	N NE E SE S <u>SW</u> W NW	Likely beach gradient:	<u>Shallow</u> /Medium/Steep
Beach Width:	~30m	Likely substrate:	Fine sand	Backshore type	Vegetated bluffs
General description:	Inside the bay, it is relatively calm and shallow, full of sea grass beds and reef, with sandy beaches lining most of the bay.				
Beach classification	Wave dominated reflective beach				
General information:					
Permits and access:	Publically accessible via paved roads. Access the western half of the beach via a small footpath to the right of the jetty.				

OSRA Map



Oil Spill Response Atlas (OSRA) map layers provided courtesy of the Australian Maritime Safety Authority (AMSA)

Large scale Google Earth map



Beach Survey Records

Transects and imagery



Photographs

Beach: Elliston

To Sea

To Shore

Along

Back

2014



2015



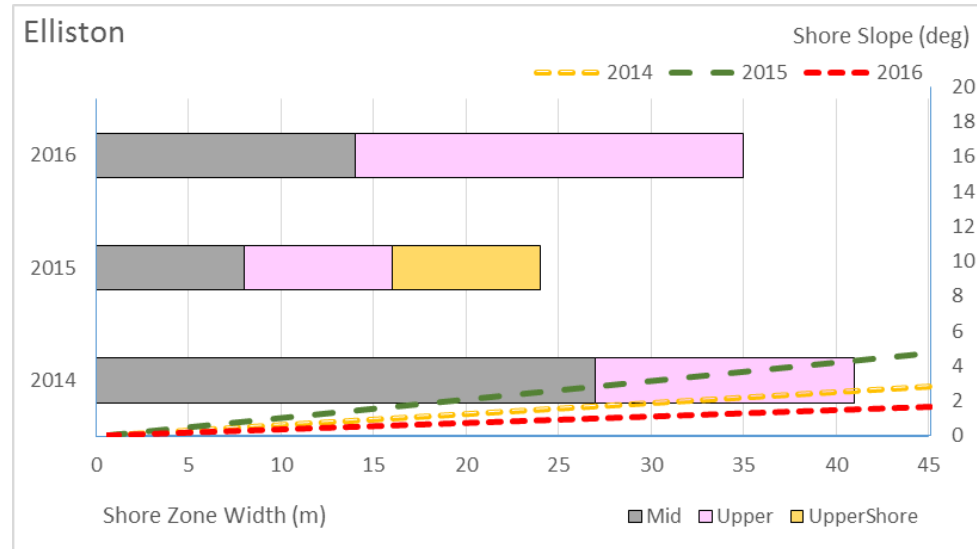
2016



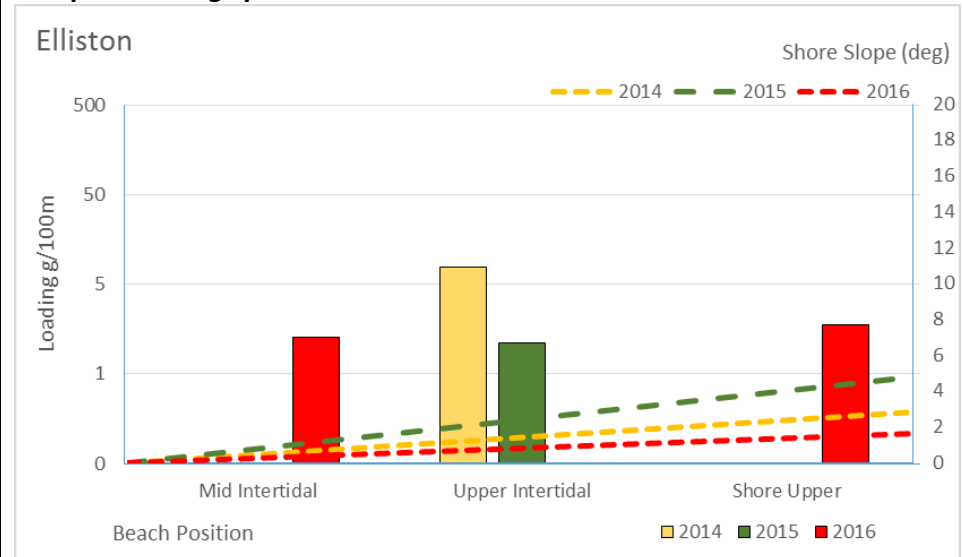
Beach Summary Data

[sample types include asphaltite, tarball and resinite]

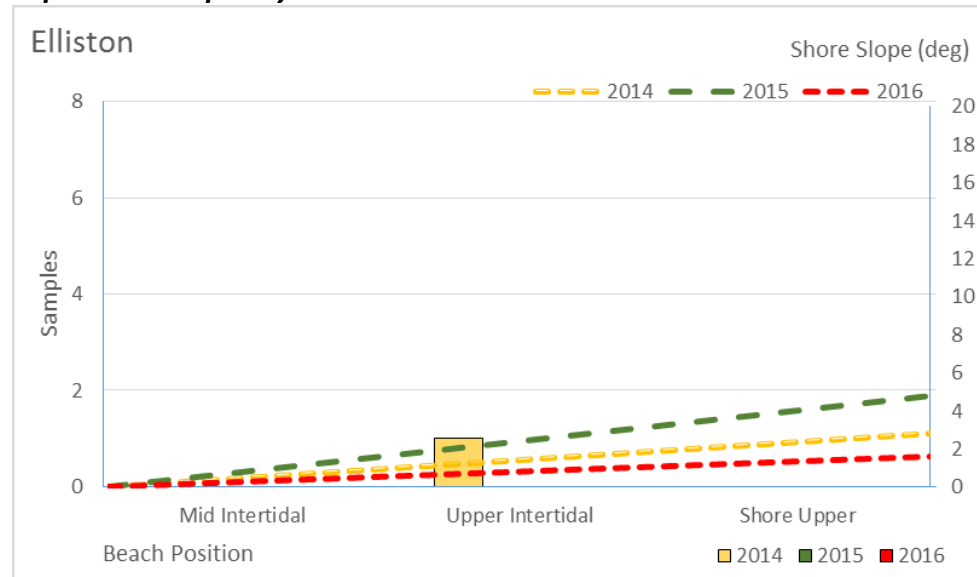
Beach Character Chart



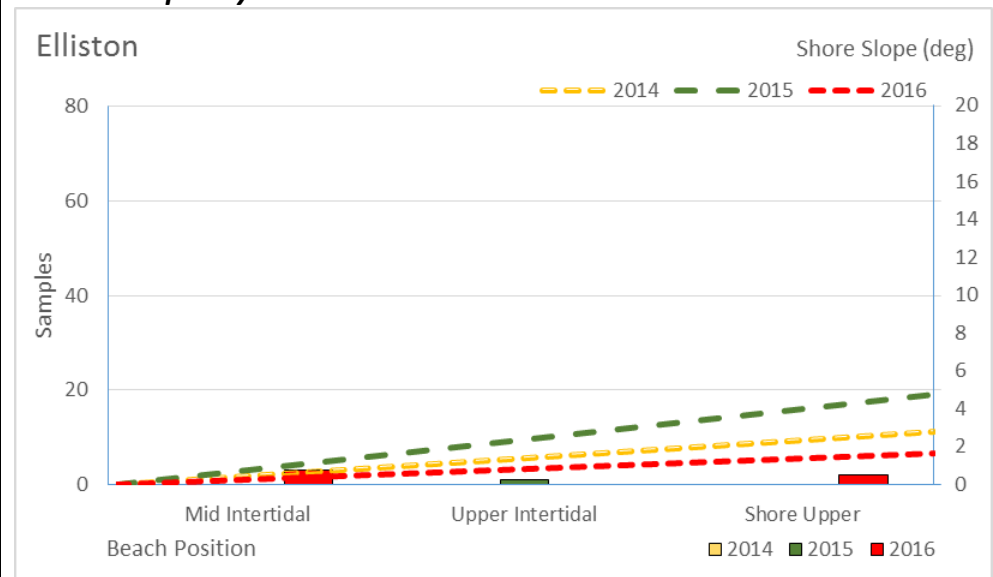
Sample Loadings per 100m Chart



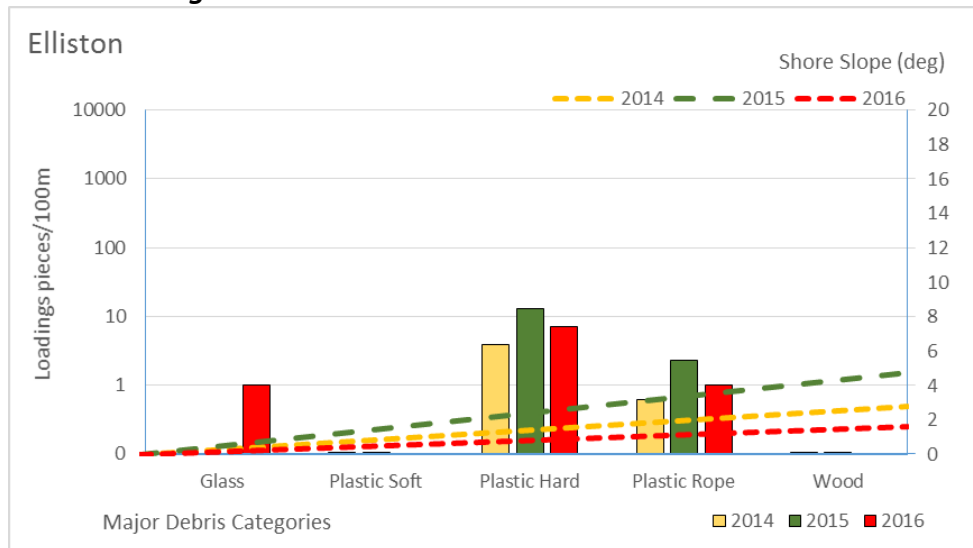
Asphaltite Frequency Chart



Tarball Frequency Chart

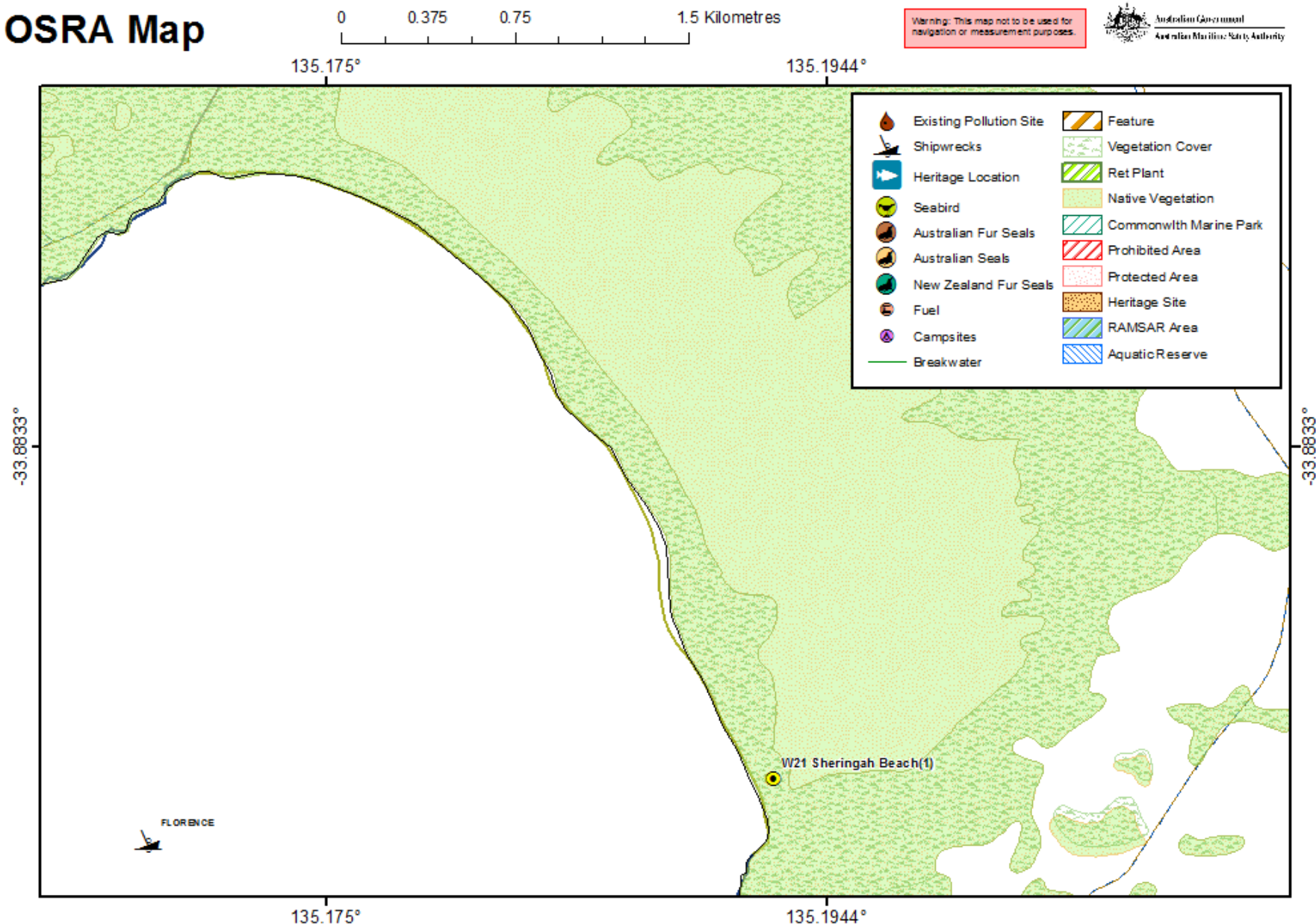


Debris Loadings Chart



Beach details					
Beach Name:	Sheringah Beach		Beach ID:	W21	Priority: 1
Access point location (DD):	Latitude: -33.8961537586 Longitude: 135.192372167		Maximum Beach survey length (km):	1.65	
General description and information					
Beach exposure or shape:	<u>Concave (cove)/Straight/</u> Convex (headland)	Aspect:	N NE E SE S <u>SW</u> W NW	Likely beach gradient:	<u>Shallow</u> /Medium/Steep
Beach Width:	~60m	Likely substrate:	Fine sand	Backshore type	Vegetated bluffs, dunes
General description:	Sheringah beach (1016) commences at the northern end of the bluffs and sweeps in a slightly curving manner for 3.9 km to the northern calcarenite bluffs, which extends 1 km west of the beach.				
Beach classification	Tide modified, reflective and low tide terrace beach				
General information:	A foredune backs the beach, then 1 to 2 km of active white sand dunes.				
Permits and access:	<p>I spoke with Louise (0886261108) who is the coastal marine officer from Cape Bauer to Sheringa Beach. She says this beach is very easy to access with a car park located steps away from the beach. The main access, car park and beach boat launching are all located at the very northern end of the beach, which is also backed by a high tide boulder beach.</p> <p>(2015) – Zack spoke with different person because Louise wasn’t in. He said we won’t have trouble accessing. He said to give Louise a call closer to date.</p>				

OSRA Map



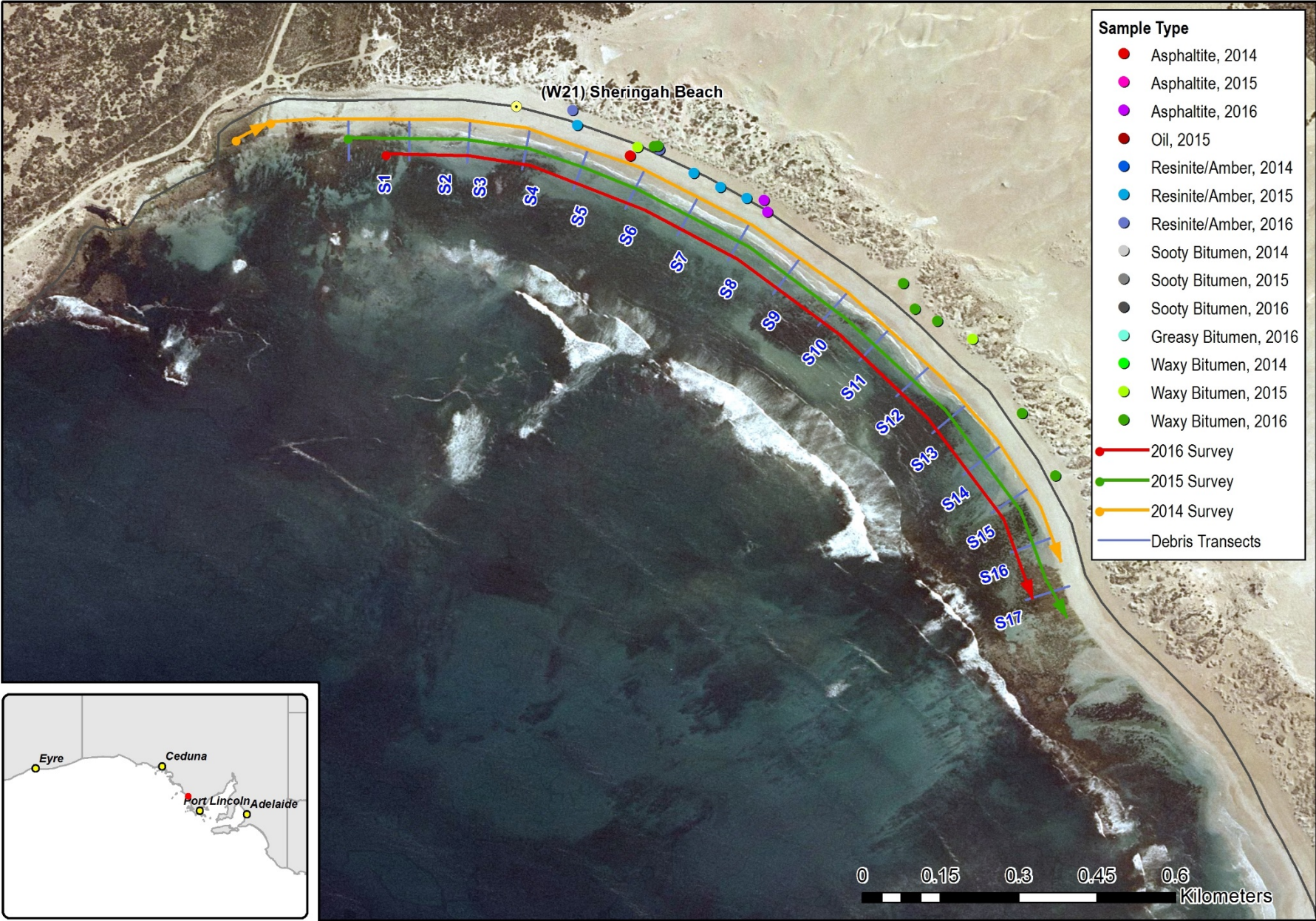
Oil Spill Response Atlas (OSRA) map layers provided courtesy of the Australian Maritime Safety Authority (AMSA)

Large scale Google Earth map



Beach Survey Records

Transects and imagery



Beach: Sheringah Beach

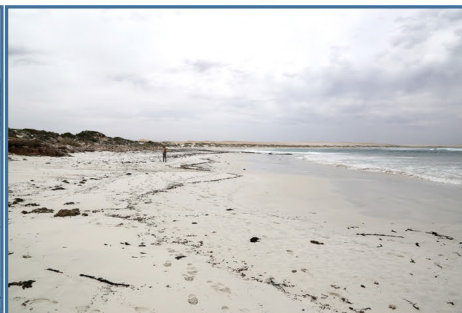
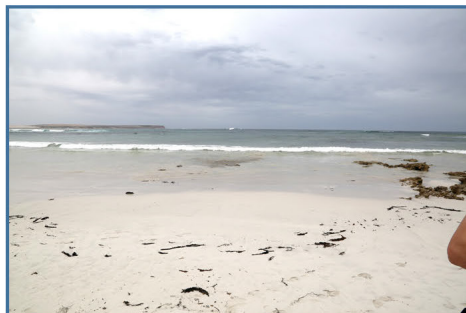
To Sea

To Shore

Along

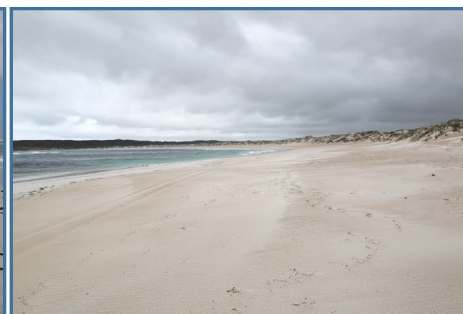
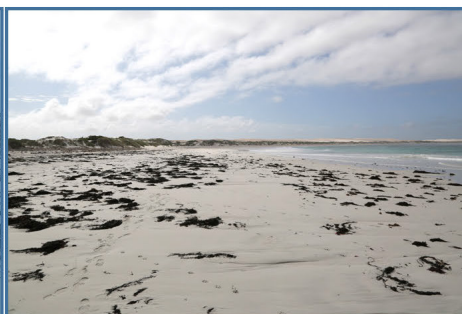
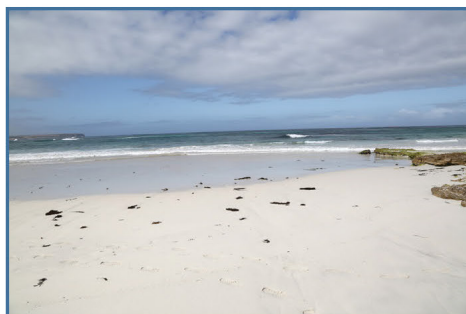
Back

2014

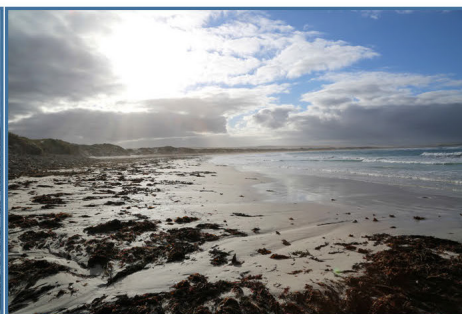
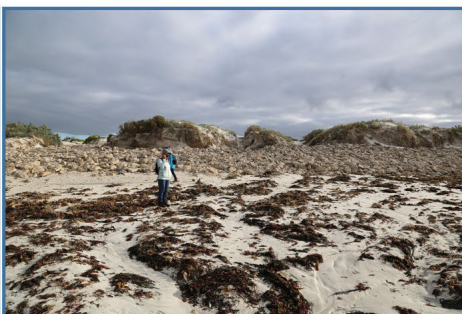
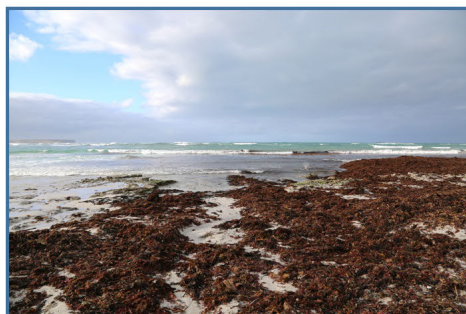


Note: 2014 start point was 250m before 2015/16 transects

2015



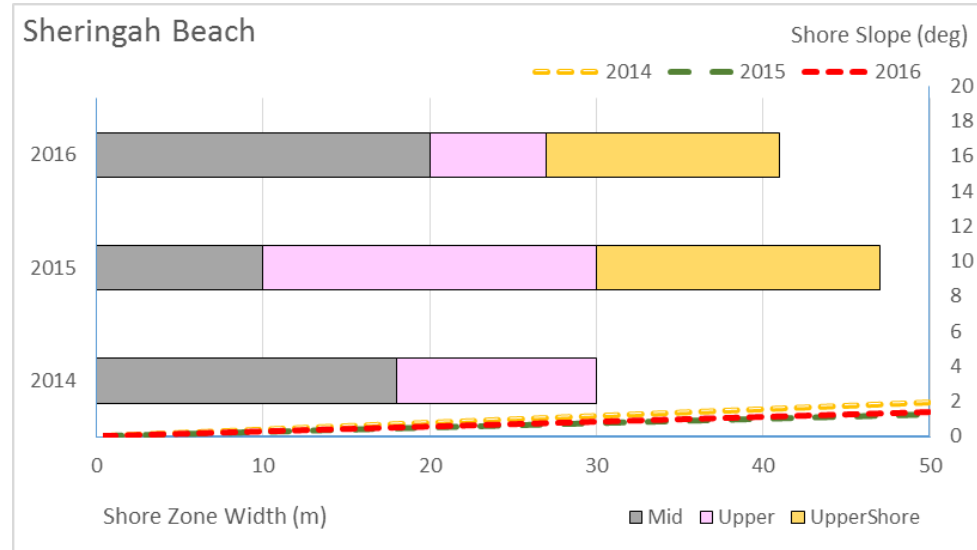
2016



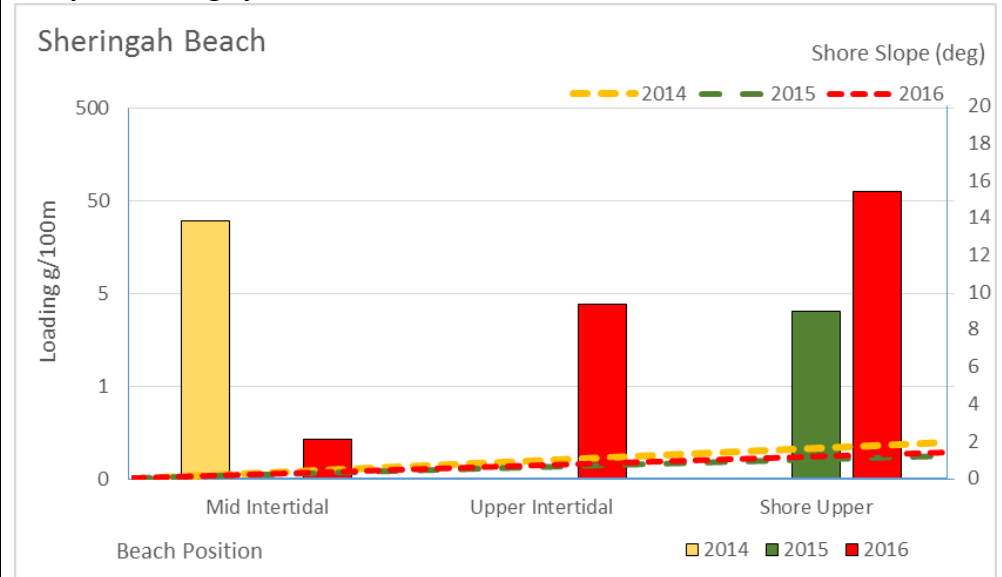
Beach Summary Data

[sample types include asphaltite, tarball and resinite]

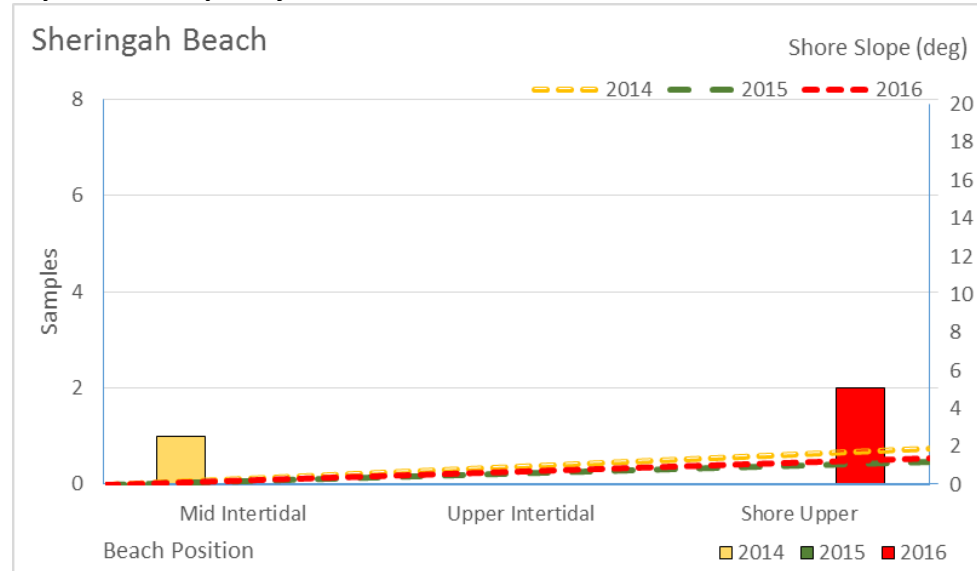
Beach Character Chart



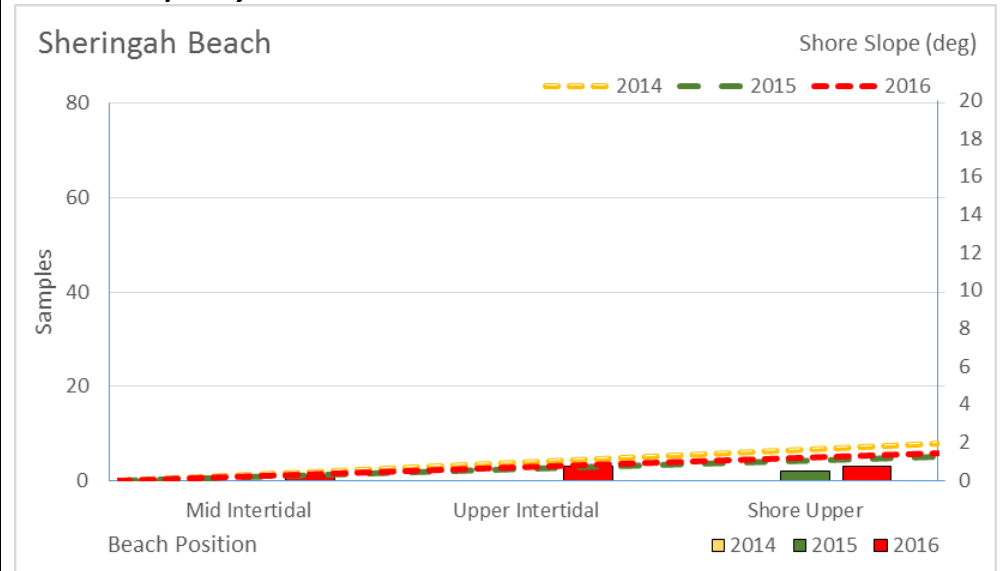
Sample Loadings per 100m Chart



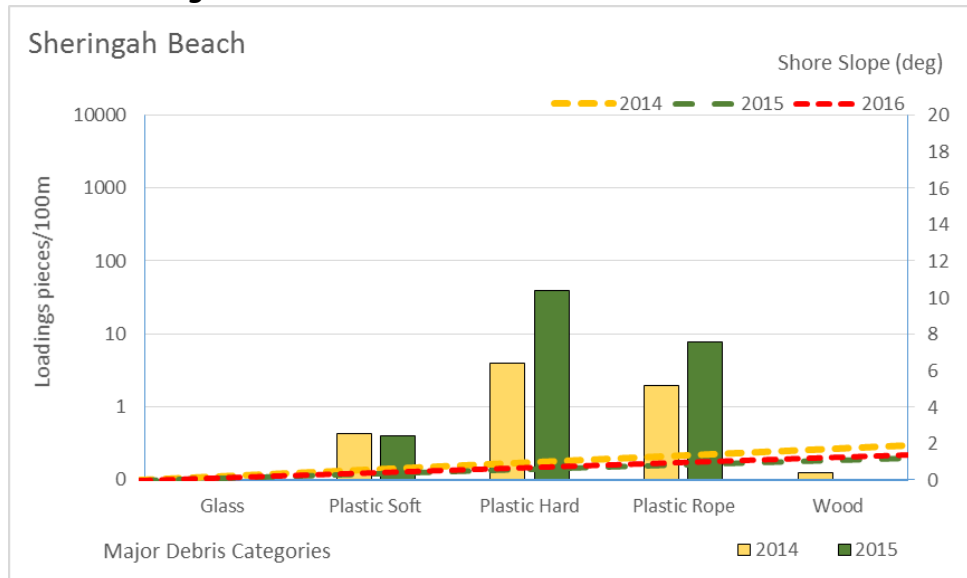
Asphaltite Frequency Chart



Tarball Frequency Chart



Debris Loadings Chart



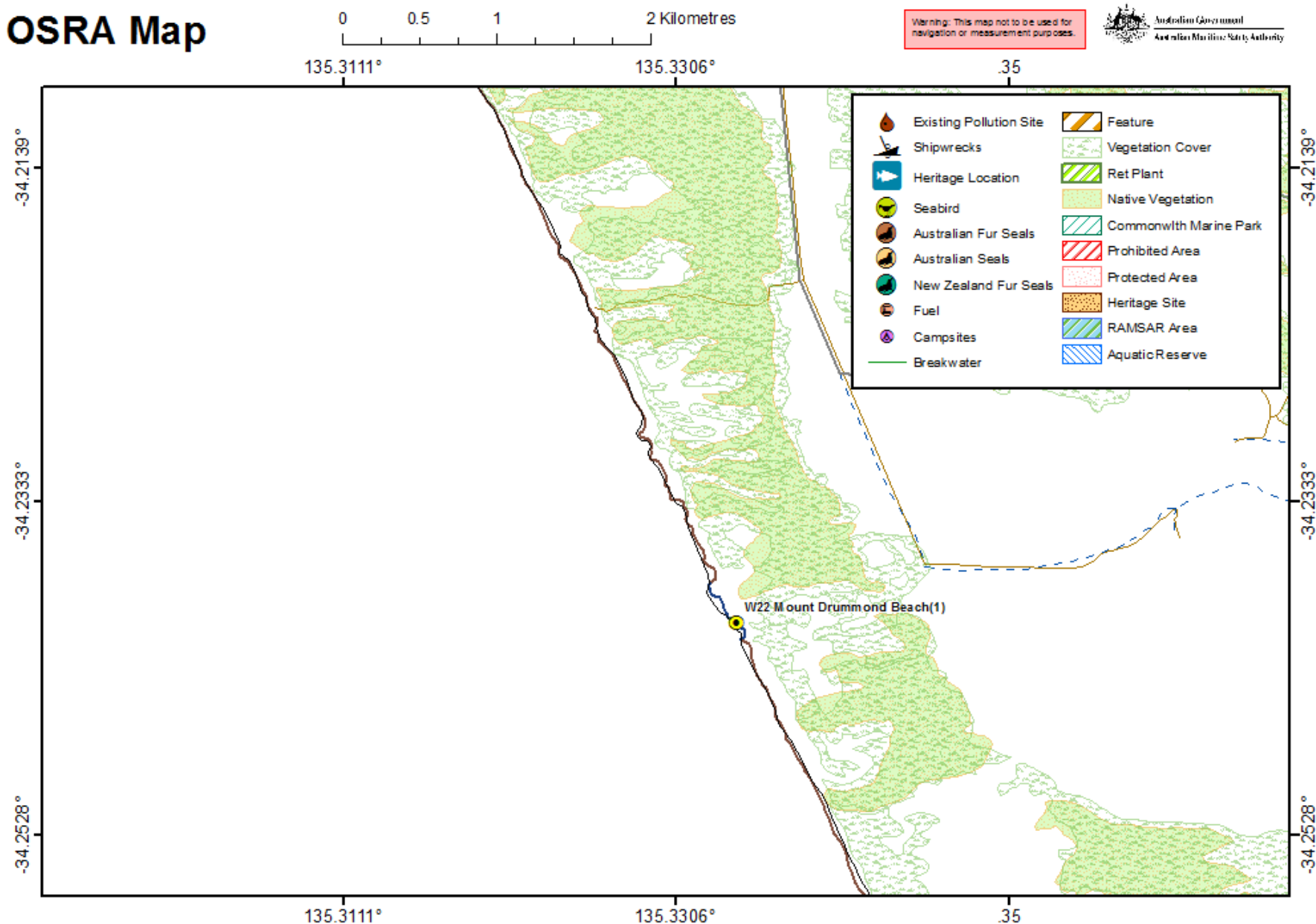
Beach details

Beach Name:	Mount Drummond Beach (AKA Convention Beach)	Beach ID:	W22	Priority:	1
Access point location (DD):	Latitude: -34.2403796416 Longitude: 135.334066157	Maximum Beach survey length (km):	1.95		

General description and information

Beach exposure or shape:	Concave (cove)/ <u>Straight</u> /Convex (headland)	Aspect:	N NE E SE S <u>SW W</u> NW	Likely beach gradient:	<u>Shallow</u> /Medium/Steep
Beach Width:	~65m	Likely substrate:	Fine sand	Backshore type	Vegetated bluffs, dunes
General description:	The main Convention Beach (976) is a straight, west facing 2.2 km sand beach, backed by active dunes extending up to 1 km inland, and fronted by a rip dominated 300 wide surf zone, usually containing 10 strong beach rips.				
Beach classification	Assumed Wave dominated				
General information:	It is bordered at either end by small calcarenite bluffs.				
Permits and access:	<p>Long drive on very rough dirt roads (far from the highway). Call Andrew Freeman 0429673123 (referred to by Louise) or Call Parks SA Port Lincoln (08) 8688 3111 if we have any problems. There are no camping facilities; however, small clearings for camping are located within the vegetated dunes.</p> <p>(2015) – Zack spoke with Andrew Freeman who said we won't have any problems with access. There are two gates that we may need to open. Take left after 2nd gate, at fork take a right, follow to southern end of beach.</p>				

OSRA Map



Oil Spill Response Atlas (OSRA) map layers provided courtesy of the Australian Maritime Safety Authority (AMSA)

Large scale Google Earth map



Beach Survey Records

Transects and imagery

